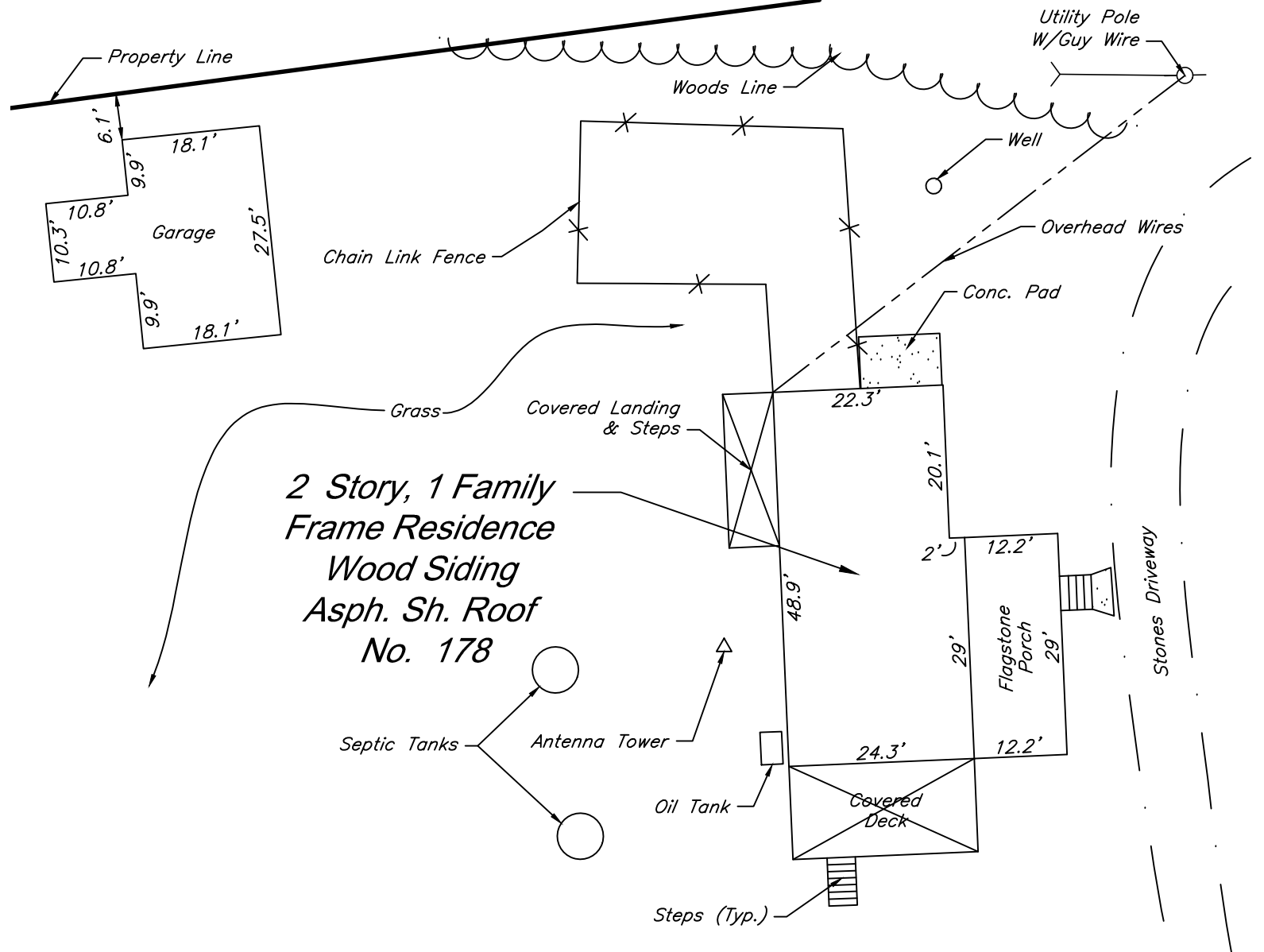


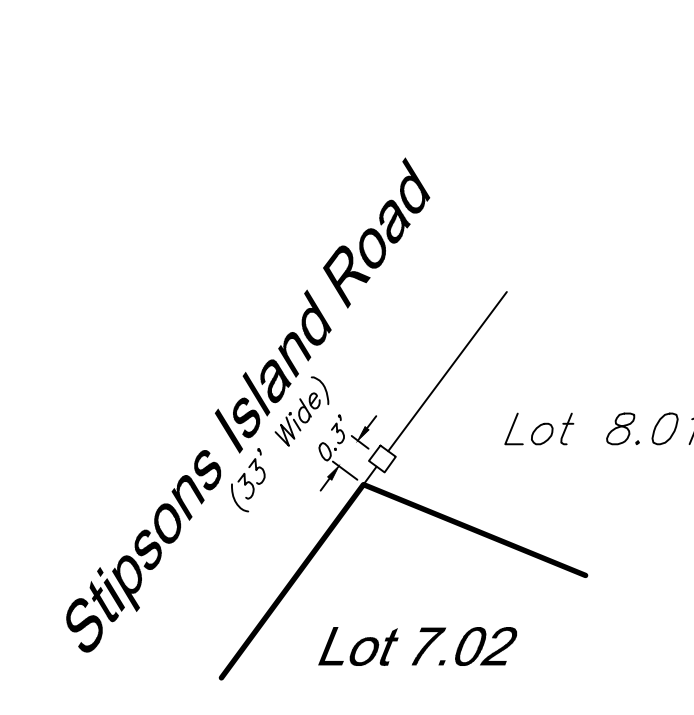
Enlargement "1"

SCALE 1" = 20'



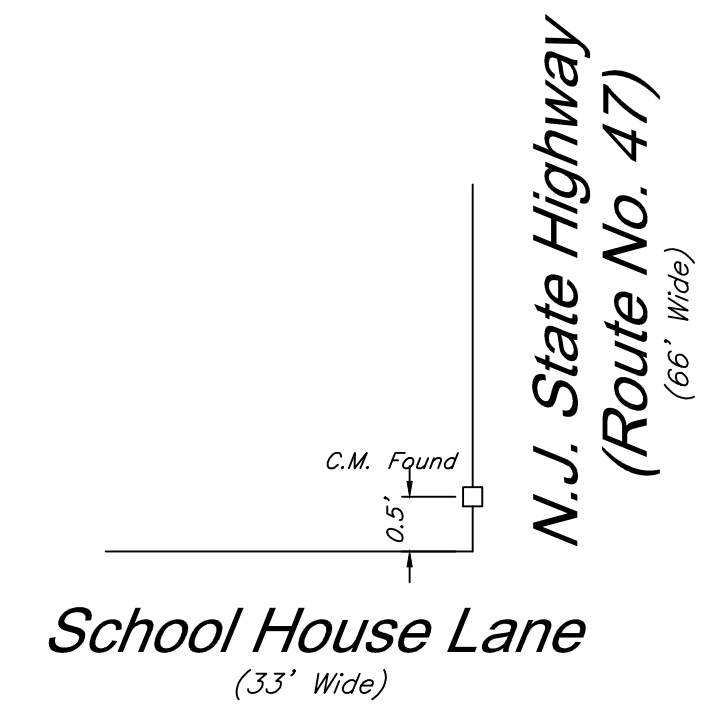
Enlargement "2"

SCALE 1" = 20'



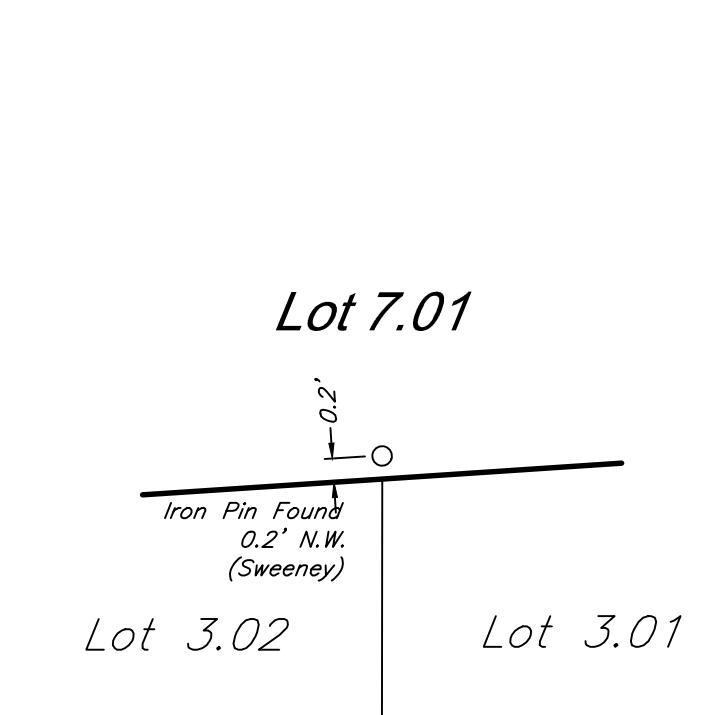
DETAIL A

SCALE: N.T.S.



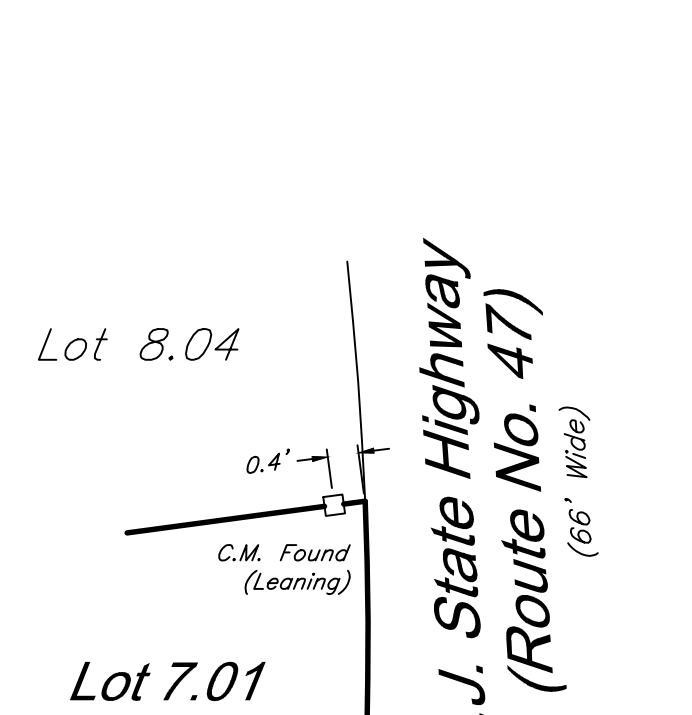
DETAIL B

SCALE: N.T.S.



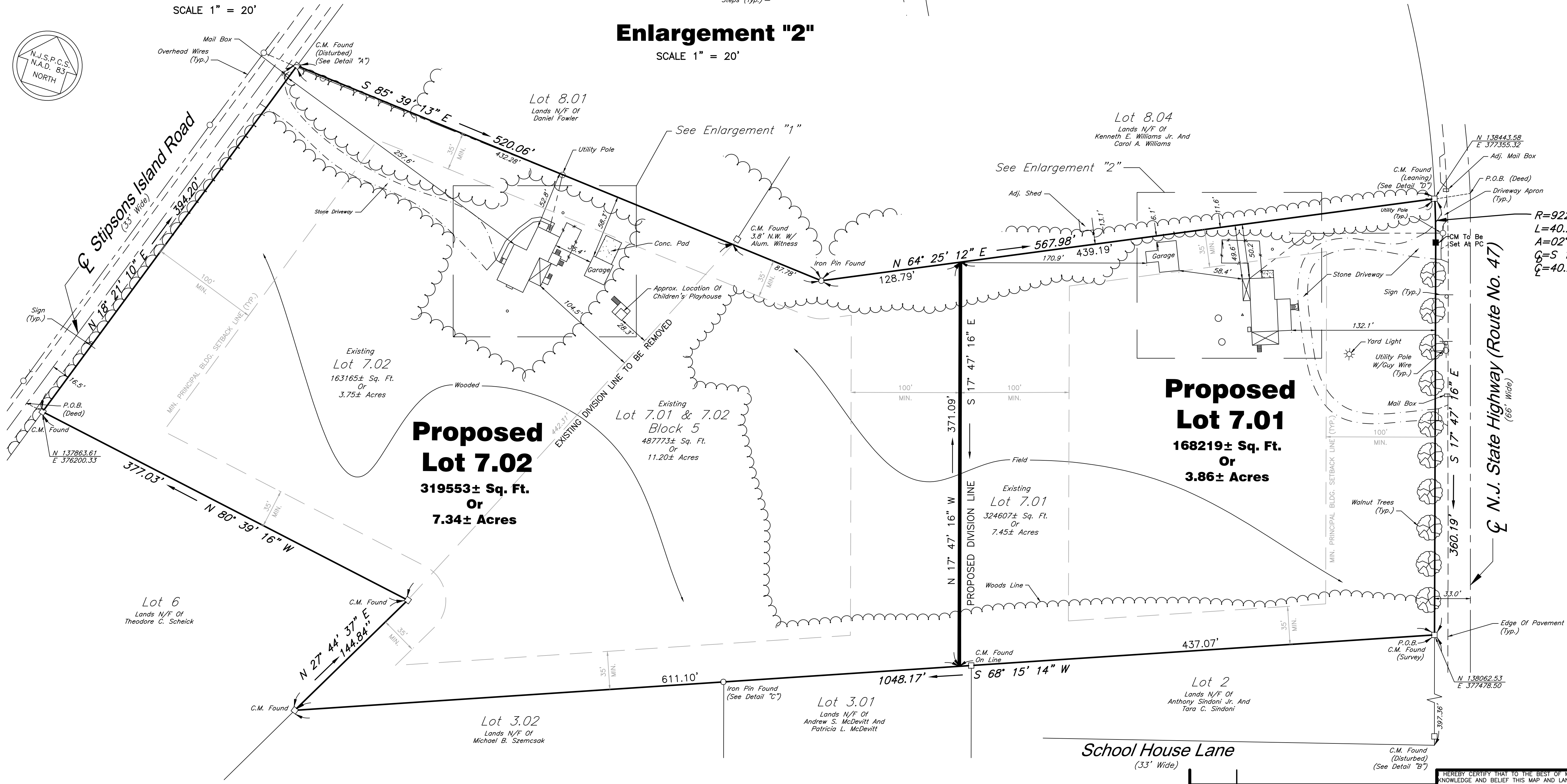
DETAIL C

SCALE: N.T.S.



DETAIL D

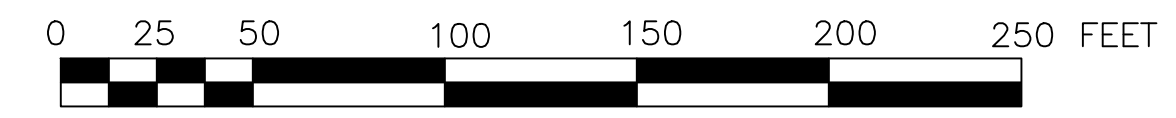
SCALE: N.T.S.



Proposed Lot 7.02
319553± Sq. Ft.
Or
7.34± Acres

Proposed Lot 7.01
168219± Sq. Ft.
Or
3.86± Acres

PLAN OF PROPOSED MINOR SUBDIVISION



SCALE 1" = 50'

DATE	REVISIONS

HEREBY CERTIFY THAT TO THE BEST OF MY KNOWLEDGE AND BELIEF THIS MAP AND LAND SURVEY DATED NOVEMBER 08, 2021 MEETS THE MINIMUM SURVEY DETAIL REQUIREMENTS OF THE STATE BOARD OF PROFESSIONAL ENGINEERS AND LAND SURVEYORS AND THE MAP HAS BEEN MADE UNDER MY SUPERVISION, AND COMPLIES WITH "THE MAP FILING LAW" AND THAT THE OUTBOUND CORNER MARKERS AS SHOWN HAVE BEEN FOUND, OR SET.

MARK J. GIBSON
LICENSED PROFESSIONAL LAND SURVEYOR
N.J.P.L.S. LICENSE NO. 32115

GIBSON ASSOCIATES, P.A.
CONSULTING ENGINEERS AND SURVEYORS
522 SEA ISLE BOULEVARD
OCEAN VIEW, NEW JERSEY 08230
(609) 624-1944

PLAN OF PROPOSED MINOR SUBDIVISION
LOTS 7.01 & 7.02, BLOCK 5
TOWNSHIP OF DENNIS
CAPE MAY COUNTY, NEW JERSEY

DRAWN: RCO/JJS CHECKED: WPF/MJG DATE: 11-08-21 SCALE: AS SHOWN SHEET 2 OF 2 DWG. No. 3578-D
F3178-3578-D(11-11-21)R1.DWG BOOK 53 PAGE 36 FILE No. 3178