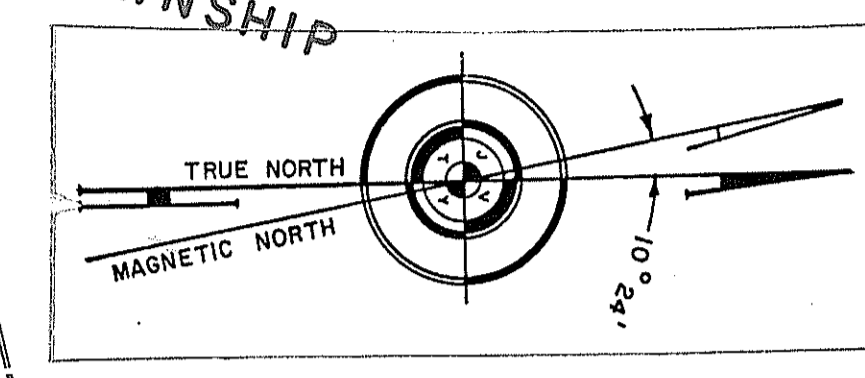
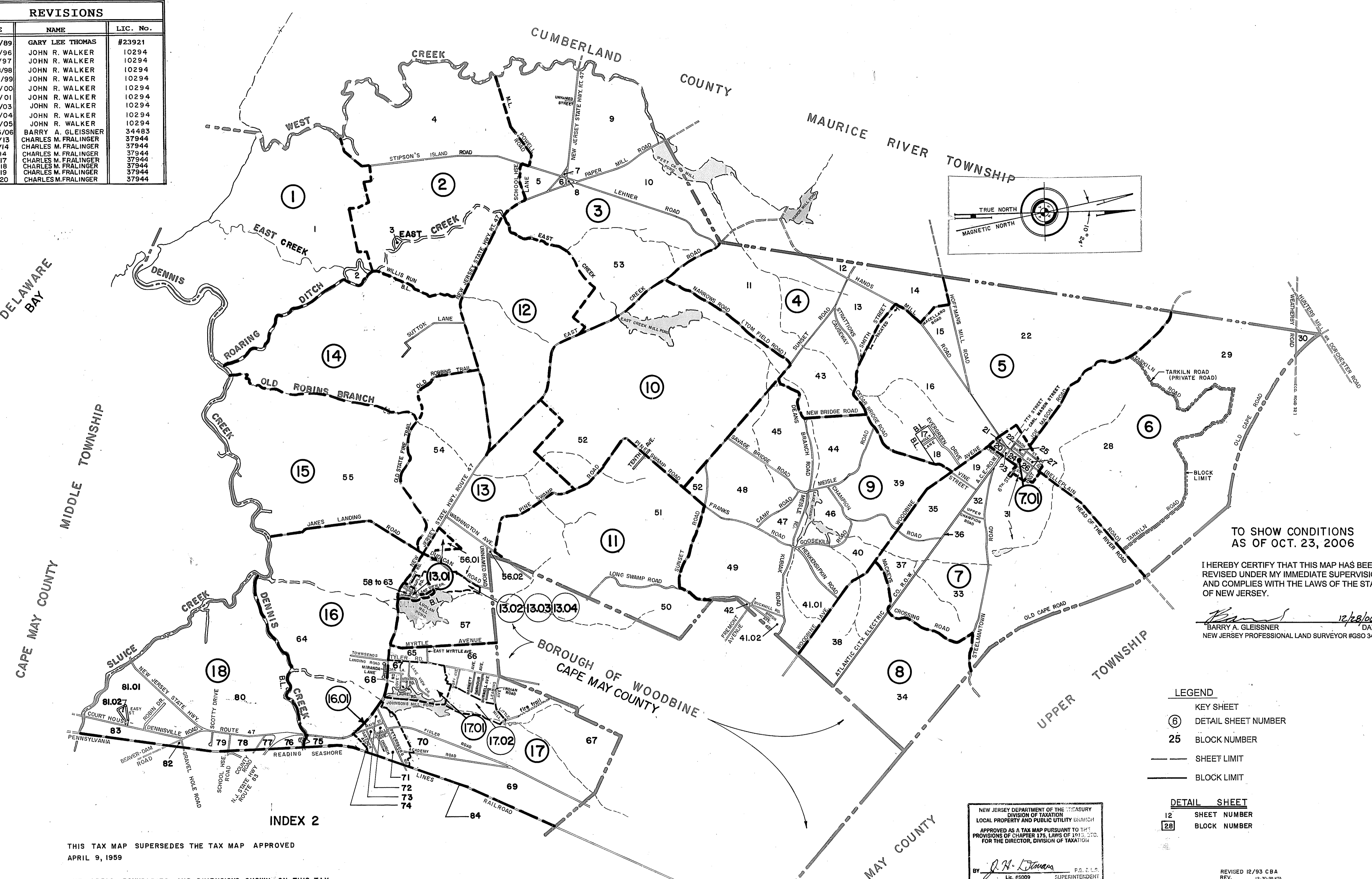


REVISIONS		
DATE	NAME	LIC. No.
3/23/89	GARY LEE THOMAS	#23921
12/12/96	JOHN R. WALKER	10294
10/16/97	JOHN R. WALKER	10294
10/28/98	JOHN R. WALKER	10294
10/22/99	JOHN R. WALKER	10294
12/18/00	JOHN R. WALKER	10294
2/9/01	JOHN R. WALKER	10294
11/14/03	JOHN R. WALKER	10294
9/3/04	JOHN R. WALKER	10294
1/20/05	JOHN R. WALKER	10294
10/23/06	BARRY A. GLEISSNER	34483
7/15/13	CHARLES M. FRALINGER	37944
3/01/14	CHARLES M. FRALINGER	37944
DEC. 14	CHARLES M. FRALINGER	37944
DEC. 17	CHARLES M. FRALINGER	37944
DEC. 18	CHARLES M. FRALINGER	37944
DEC. 19	CHARLES M. FRALINGER	37944
DEC. 20	CHARLES M. FRALINGER	37944



TO SHOW CONDITIONS AS OF OCT. 23, 2006

I HEREBY CERTIFY THAT THIS MAP HAS BEEN REVISED UNDER MY IMMEDIATE SUPERVISION AND COMPLIES WITH THE LAWS OF THE STATE OF NEW JERSEY.

*[Signature]* 12/28/06  
 BARRY A. GLEISSNER DATE  
 NEW JERSEY PROFESSIONAL LAND SURVEYOR #GSO 34483

- LEGEND**
- KEY SHEET
  - ⑥ DETAIL SHEET NUMBER
  - 25 BLOCK NUMBER
  - SHEET LIMIT
  - BLOCK LIMIT

- DETAIL SHEET**
- 12 SHEET NUMBER
  - 28 BLOCK NUMBER

NEW JERSEY DEPARTMENT OF THE TREASURY  
 DIVISION OF TAXATION  
 LOCAL PROPERTY AND PUBLIC UTILITY DIVISION  
 APPROVED AS A TAX MAP PURSUANT TO THE PROVISIONS OF CHAPTER 175, LAWS OF 1980, ETC. FOR THE DIRECTOR, DIVISION OF TAXATION

BY *[Signature]* P.E. & L.S.  
 Lic. #5009 SUPERINTENDENT  
 DATE Dec. 8, 1980 SERIAL NO. 593

REVISED 12/93 CBA  
 REV. 12-30-98 RW  
 REVISIONS 4-29-02  
 BY ALVIN C. HERMAN, P.E. & L.S.  
 N.J. LIC. NO. 13284

**TAX MAP**  
 TOWNSHIP OF DENNIS  
 CAPE MAY COUNTY, NEW JERSEY  
 SCALE: 1" = 2000' APRIL 1, 1980  
 ALVIN C. HERMAN N.J.P.E.L.S. 13284  
 ALVIN C. HERMAN ASSOC. INC.  
 7, MECHANIC ST., CAPE MAY COURT HOUSE, NJ 08210  
 TO SHOW CONDITIONS AS OF MARCH 1, 2014.

THIS TAX MAP SUPERSEDES THE TAX MAP APPROVED APRIL 9, 1959

THE AREAS, BOUNDARIES, AND DIMENSIONS SHOWN ON THIS TAX MAP ARE DERIVED FROM GROUND SURVEYS, AERIAL SURVEYS, AND RECORDED PLANS, MAPS, DEEDS AND WILLS AND ARE TO BE USED FOR ASSESSMENT PURPOSES ONLY.

I HEREBY CERTIFY THAT THIS MAP HAS BEEN REVISED UNDER MY IMMEDIATE SUPERVISION AND COMPLIES WITH THE LAWS OF THE STATE OF NEW JERSEY.

*[Signature]* 2-14  
 CHARLES M. FRALINGER, P.L.S. LIC #G537944

"I hereby certify that this map has been revised under my immediate supervision, and complies with the laws of the State of New Jersey".

*[Signature]* 2-20-09  
 GARY LEE THOMAS NJLS #29321 DATE

I HEREBY CERTIFY THAT THIS MAP AND THE SURVEY HAS BEEN MADE UNDER MY IMMEDIATE SUPERVISION AND COMPLIES WITH THE LAWS OF THE STATE OF NEW JERSEY

*[Signature]*  
 ALVIN C. HERMAN, P.E. & L.S., N.J. LIC. NO. 13284