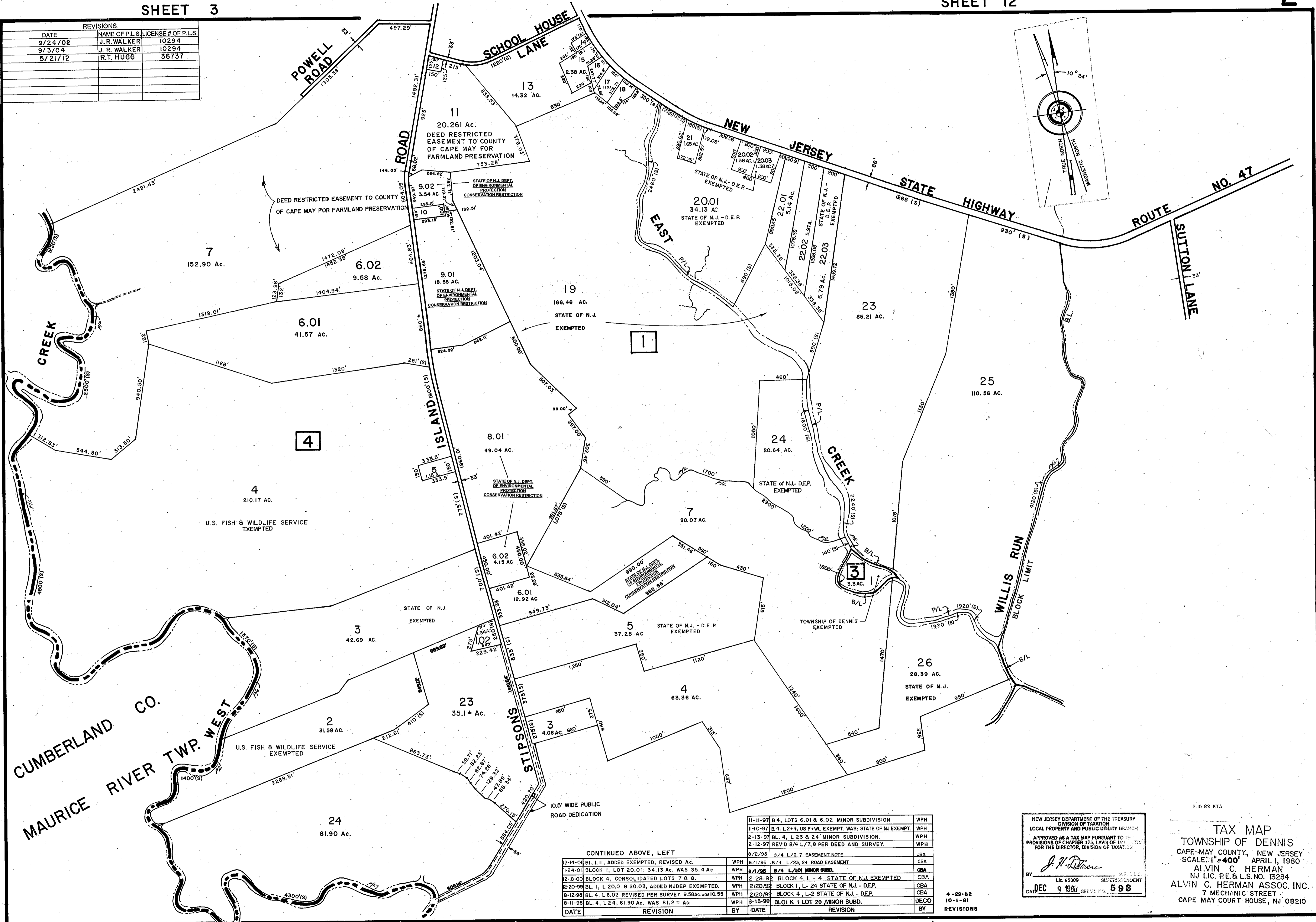
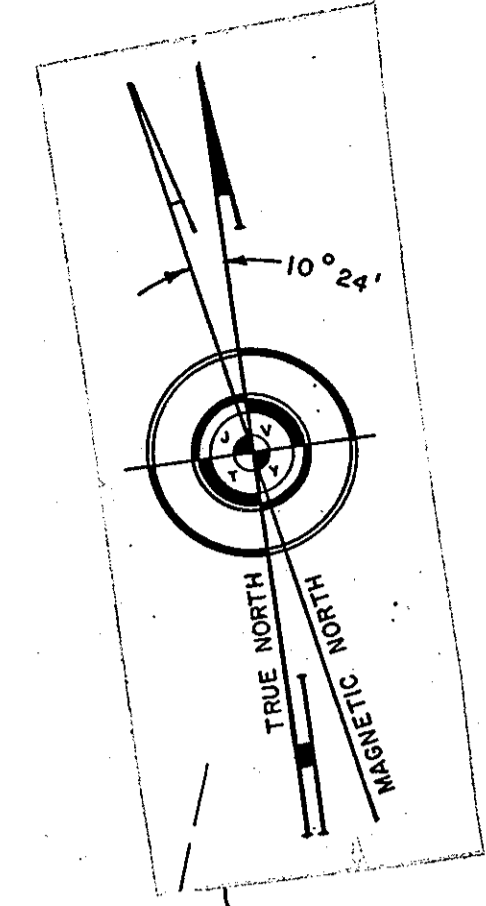


REVISIONS		
DATE	NAME OF P.L.S.	LICENSE # OF P.L.S.
9/24/02	J. R. WALKER	10294
9/3/04	J. R. WALKER	10294
5/21/12	R.T. HUGG	36737



CUMBERLAND CO.
MAURICE RIVER TWP. WEST

DATE	REVISION	BY	DATE	REVISION	BY
12-14-01	Bl. L.II, ADDED EXEMPTED, REVISED AC.	WPH	8-11-97	B4, LOTS 6.01 & 6.02 MINOR SUBDIVISION	WPH
1-24-01	BLOCK 1, LOT 20.01: 34.13 AC. WAS 35.4 AC.	WPH	11-10-97	B4, L2+4, US F-WL EXEMPT. WAS: STATE OF NJ EXEMPT.	WPH
12-18-00	BLOCK 4, CONSOLIDATED LOTS 7 & 8.	WPH	2-13-97	BL. 4, L 23 & 24 MINOR SUBDIVISION.	WPH
12-20-99	BL. 1, L 20.01 & 20.03, ADDED NJDEP EXEMPTED.	WPH	2-12-97	REV'D B4 L7, 8 PER DEED AND SURVEY.	WPH
8-12-98	BL. 4, L 6.02 REVISED PER SURVEY, 9.58 AC. WAS 10.55	WPH	8/2/95	3/4 L/6, 7 EASEMENT NOTE	LBA
8-11-98	BL. 4, L 24, 81.90 AC. WAS 81.2 AC.	WPH	8/1/95	B/4 L/23, 24 ROAD EASEMENT	CBA
			8/1/95	B/4 L/101 MINOR SUBD.	CBA
			2-28-92	BLOCK 4, L - 4 STATE OF N.J. EXEMPTED	CBA
			2/20/92	BLOCK 1, L - 24 STATE OF N.J. - DEP.	CBA
			2/20/92	BLOCK 4, L-2 STATE OF N.J. - DEP.	CBA
			8-15-90	BLOK K 1 LOT 20, MINOR SUBD.	DECO

NEW JERSEY DEPARTMENT OF THE TREASURY
DIVISION OF TAXATION
LOCAL PROPERTY AND PUBLIC UTILITY DIVISION
APPROVED AS A TAX MAP PURSUANT TO THE
PROVISIONS OF CHAPTER 175, LAWS OF 1980, P.L. 1980-107,
FOR THE DIRECTOR, DIVISION OF TAXATION.

J. H. DeLeon
SUPERINTENDENT

DATE: DEC 2 1980

TAX MAP
TOWNSHIP OF DENNIS
CAPE-MAY COUNTY, NEW JERSEY
SCALE: 1"=400' APRIL 1, 1980
ALVIN C. HERMAN
NJ LIC. P.E. & L.S. NO. 13284
ALVIN C. HERMAN ASSOC. INC.
7 MECHANIC STREET
CAPE MAY COURT HOUSE, NJ 08210