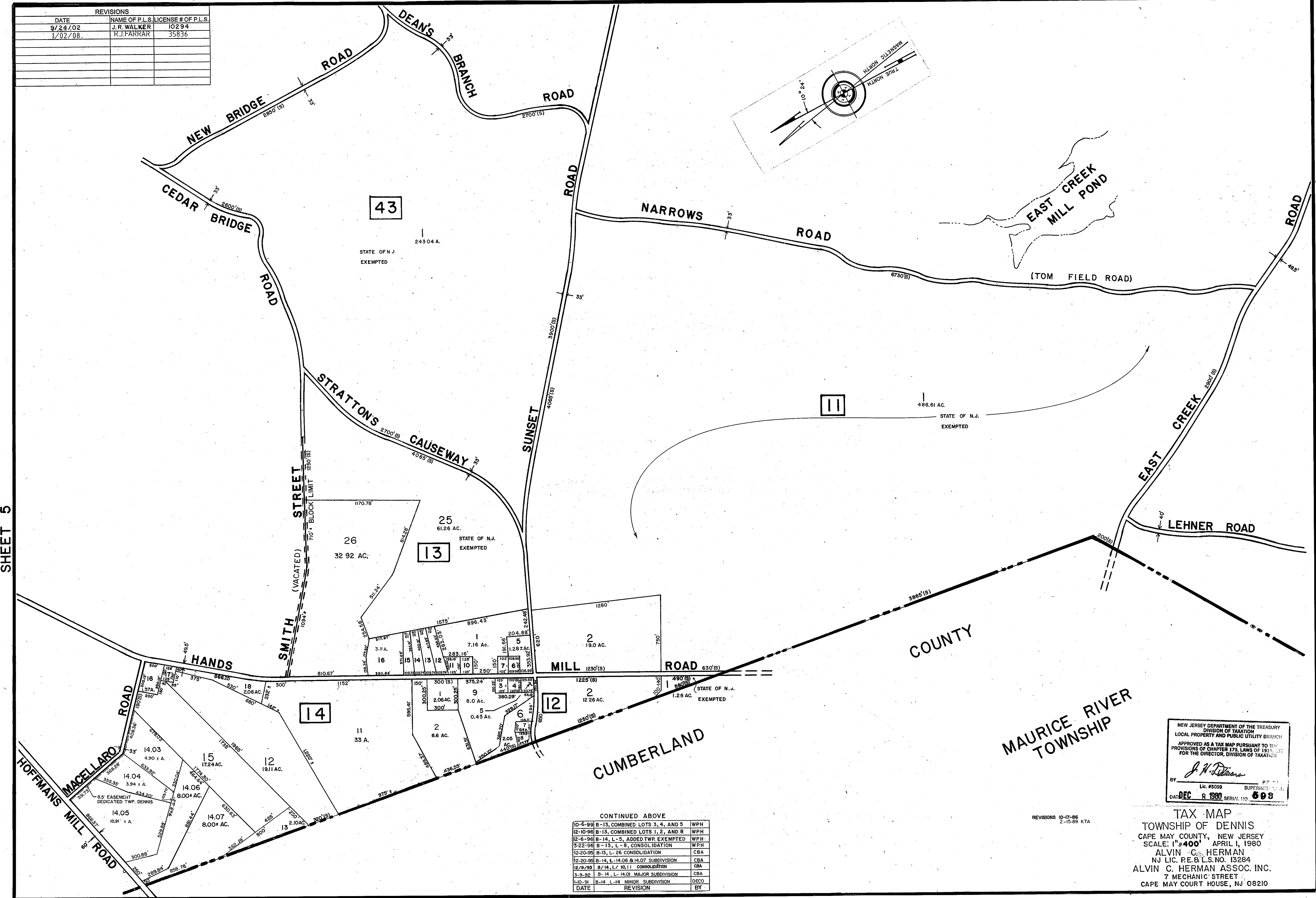
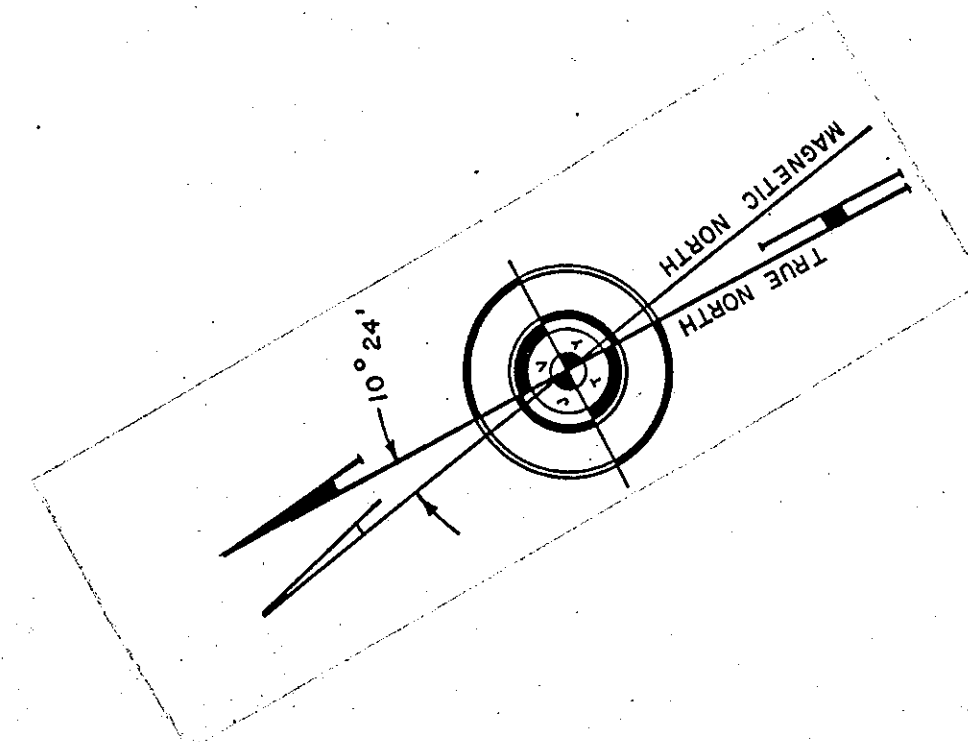


REVISIONS		
DATE	NAME OF P.L.S.	LICENSE # OF P.L.S.
9/24/02	J.R. WALKER	10294
1/02/08	R.J. FARRAR	35836



SHEET 5

SHEET 3

CONTINUED ABOVE

DATE	REVISION	BY
10-6-99	B-13, COMBINED LOTS 3, 4, AND 5	WPH
12-10-98	B-13, COMBINED LOTS 1, 2, AND 8	WPH
12-6-96	B-14, L-5, ADDED TWP. EXEMPTED	WPH
3-22-96	B-13, L-8, CONSOLIDATION	WPH
12-20-95	B-13, L-26 CONSOLIDATION	CBA
12-20-95	B-14, L-14.06 & 14.07 SUBDIVISION	CBA
12/9/95	B-14, L-10, 11 CONSOLIDATION	CBA
3-9-92	B-14, L-14.01 MAJOR SUBDIVISION	CBA
1-10-91	B-14, L-14 MINOR SUBDIVISION	DECO

NEW JERSEY DEPARTMENT OF THE TREASURY
 DIVISION OF TAXATION
 LOCAL PROPERTY AND PUBLIC UTILITY BRANCH
 APPROVED AS A TAX MAP PURSUANT TO THE
 PROVISIONS OF CHAPTER 179, LAWS OF 1915, SEC.
 FOR THE DIRECTOR, DIVISION OF TAXATION.
J. H. [Signature]
 BY: Lic. #5009 SUPERINTENDENT
 DATE: DEC 8 1980 SERIAL NO. 509

TAX MAP
 TOWNSHIP OF DENNIS
 CAPE MAY COUNTY, NEW JERSEY
 SCALE: 1"=400' APRIL 1, 1980
 ALVIN C. HERMAN
 NJ LIC. P.E. & L.S. NO. 13284
 ALVIN C. HERMAN ASSOC. INC.
 7 MECHANIC STREET
 CAPE MAY COURT HOUSE, NJ 08210

REVISIONS 10-17-86
2-15-89 KTA