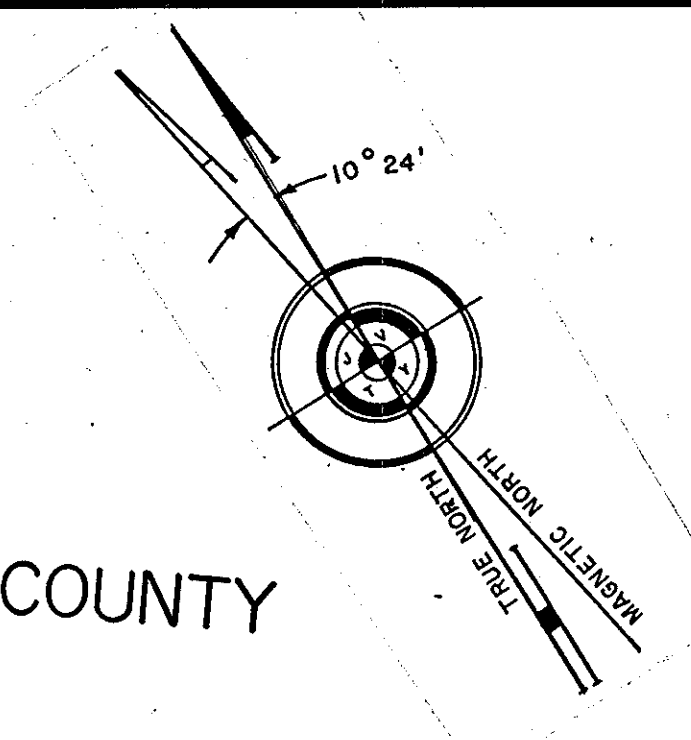
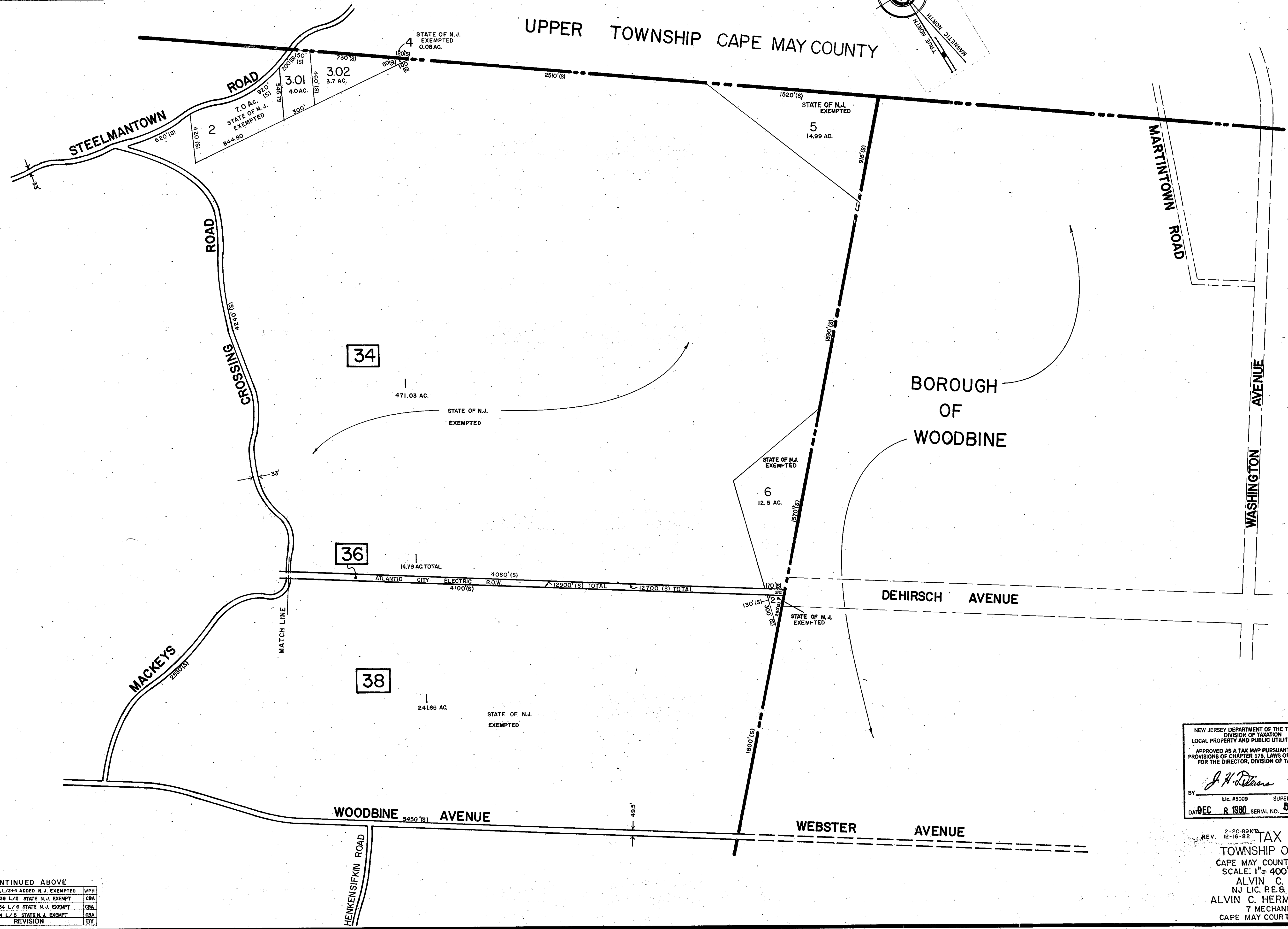


REVISIONS		
DATE	NAME OF P.L.S.	LICENSE # OF P.L.S.
9/24/02	J.R. WALKER	10294



UPPER TOWNSHIP CAPE MAY COUNTY



SHEET 7

CONTINUED ABOVE

DATE	REVISION	BY
12-17-01	B/24, L/244 ADDED N.J. EXEMPTED	WPH
11/30/03	B/38 L/2 STATE N.J. EXEMPT	CBA
11/30/03	B/34 L/6 STATE N.J. EXEMPT	CBA
11/30/03	B/34 L/8 STATE N.J. EXEMPT	CBA

NEW JERSEY DEPARTMENT OF THE TREASURY
 DIVISION OF TAXATION
 LOCAL PROPERTY AND PUBLIC UTILITY BRANCH
 APPROVED AS A TAX MAP PURSUANT TO THE
 PROVISIONS OF CHAPTER 178, LAWS OF 1913, ETC.
 FOR THE DIRECTOR, DIVISION OF TAXATION
J. H. Deiana
 BY SUPERINTENDENT
 Lic. #5009
 DATE DEC 9 1980 SERIAL NO. 593

REV. 2-20-89/12-16-82
 TAX MAP
 TOWNSHIP OF DENNIS
 CAPE MAY COUNTY, NEW JERSEY
 SCALE: 1" = 400' APRIL 1, 1980
 ALVIN C. HERMAN
 NJ LIC. P.E. & L.S. NO. 13284
 ALVIN C. HERMAN ASSOC. INC.
 7 MECHANIC STREET
 CAPE MAY COURT HOUSE, NJ 08210