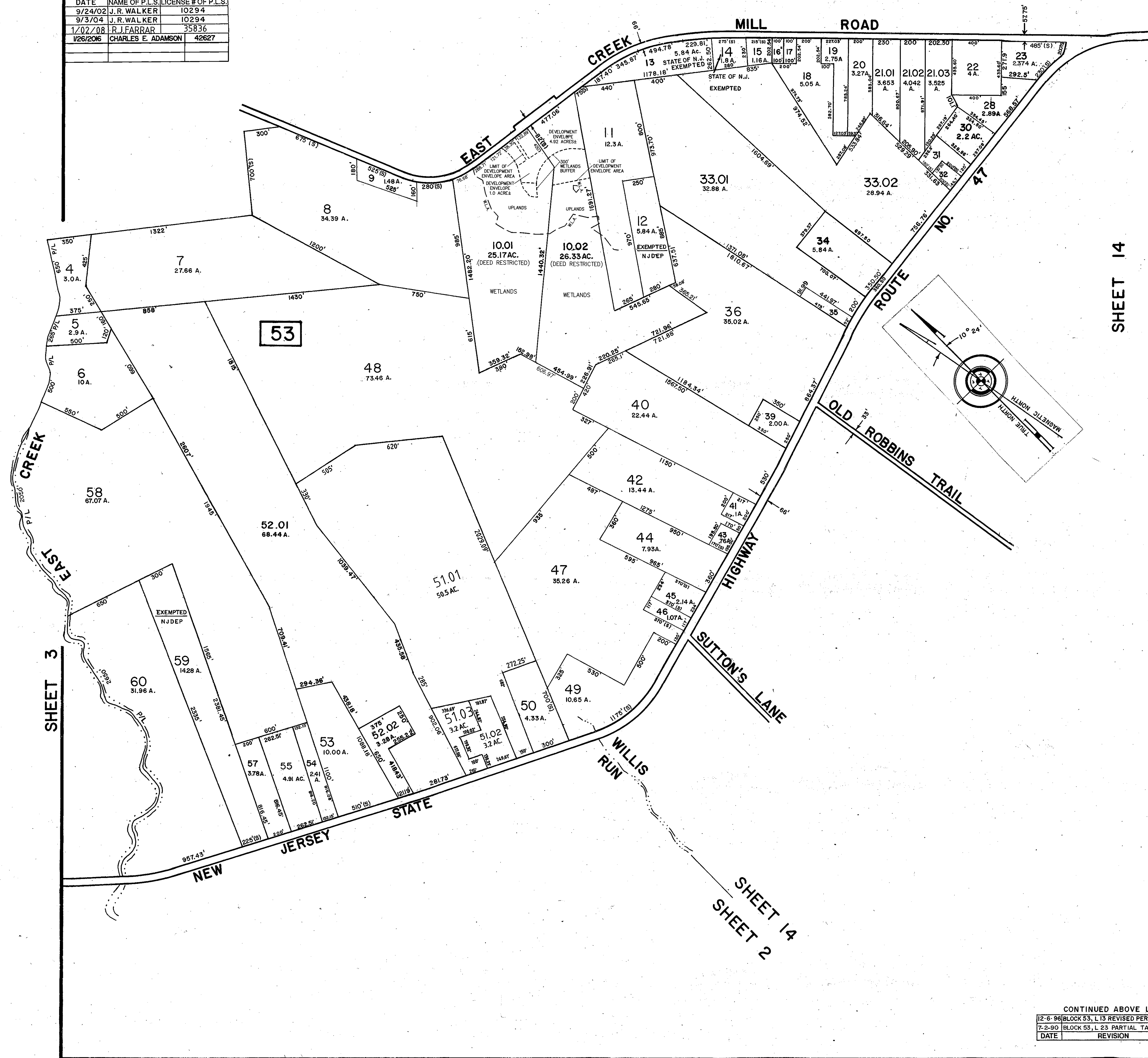


REVISIONS		
DATE	NAME OF P.L.S.	LICENSE # OF P.L.S.
9/24/02	J. R. WALKER	10294
9/3/04	J. R. WALKER	10294
1/02/08	R. J. FARRAR	35836
12/6/2006	CHARLES E. ADAMSON	42627



SHEET 3

SHEET 14

SHEET 14
SHEET 2

SHEET 2

CONTINUED ABOVE LEFT		
DATE	REVISION	BY
12-6-96	BLOCK 53, L 13 REVISED PER SURVEY	WPHA
7-2-90	BLOCK 53, L 23 PARTIAL TAKING	DECO

NEW JERSEY DEPARTMENT OF THE TREASURY
DIVISION OF TAXATION
LOCAL PROPERTY AND PUBLIC UTILITY BRANCH

APPROVED AS A TAX MAP PURSUANT TO THE PROVISIONS OF CHAPTER 175, LAWS OF 1913, ETC. FOR THE DIRECTOR, DIVISION OF TAXATION

J. H. DiStasio
P.E. & L.S.
Lic. #5009
SUPERINTENDENT

DATE: DEC 8 1980 SERIAL NO. 683

6-9-89 KTA
2-20-89 KTA
10-17-86
12-8-84
12-8-82
10-1-81

TAX MAP
TOWNSHIP OF DENNIS
CAPE MAY COUNTY, NEW JERSEY
SCALE: 1" = 400' APRIL 1, 1980
ALVIN C. HERMAN
NJ LIC. P.E. & L.S. NO. 13284
ALVIN C. HERMAN ASSOC. INC.
7 MECHANIC STREET
CAPE MAY COURT HOUSE, NJ 08210