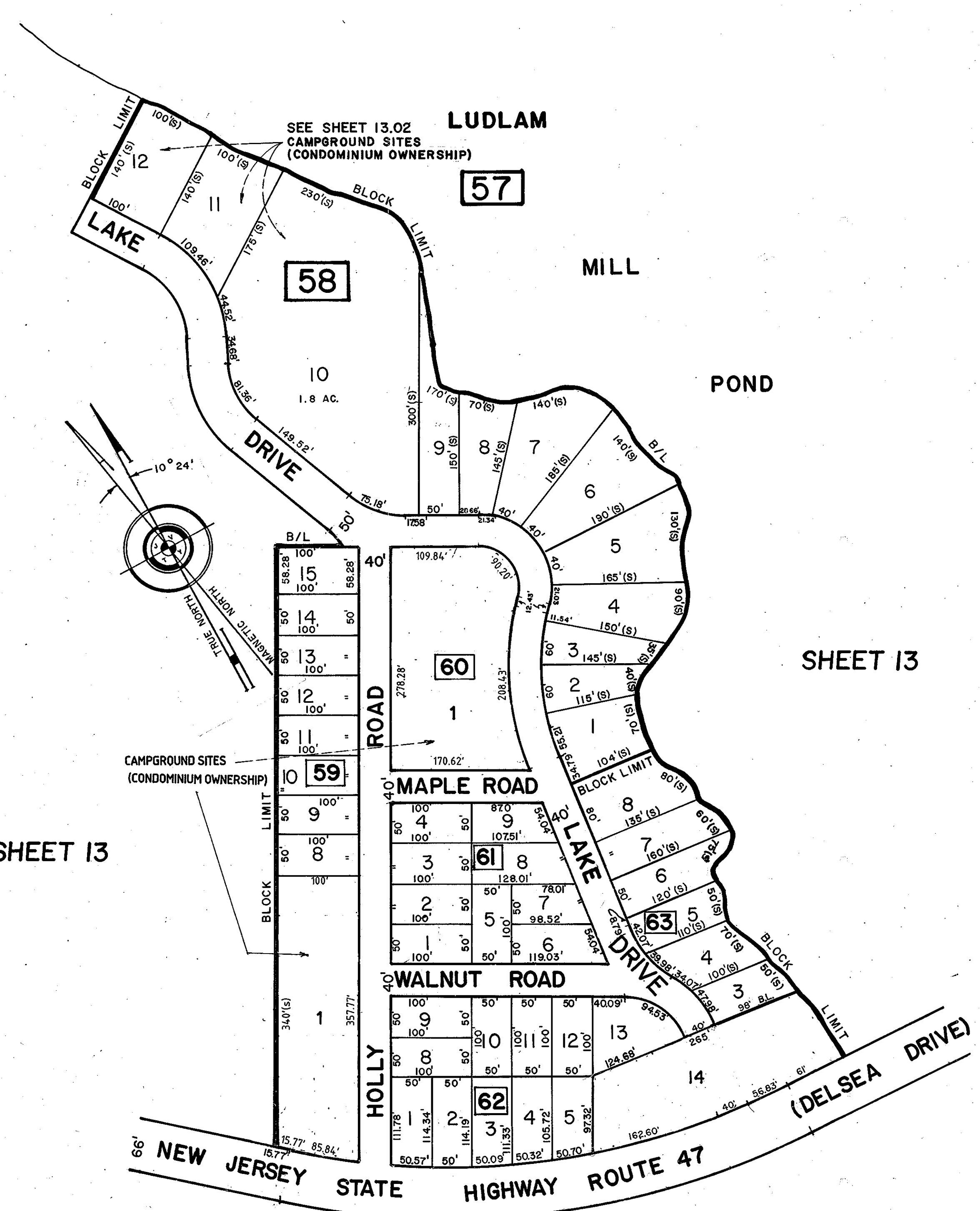
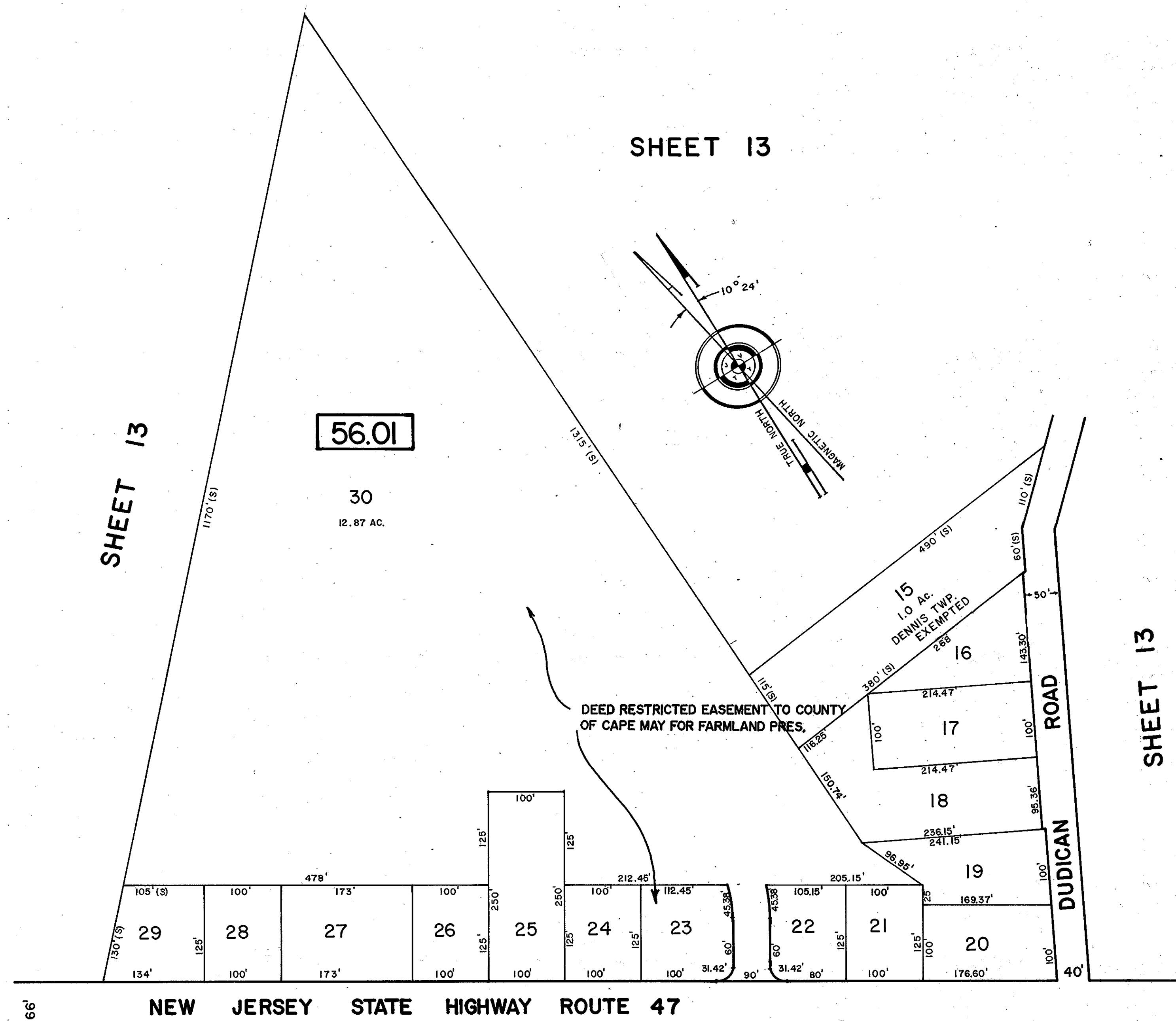


REVISIONS		
DATE	NAME OF P.L.S.	LICENSE # OF P.L.S.
9/24/02	J.R. WALKER	10294
5/13/08	R.J. FARRAR	35836



CONTINUED ABOVE

DATE	REVISION	BY
12-17-01	858 & 63, VACATE PT MAPLE ROAD	WPHA
8/22/96	8/56.01 L/23.30 EASEMENT NOTE	CBA
12/9/92	8/62 & 63, L/ 6.7 & 12 & VACATED ST.	CBA
7/7/92	VACATED PORTION LAKE DR. # 92225	CBA

NEW JERSEY DEPARTMENT OF THE TREASURY
DIVISION OF TAXATION
LOCAL PROPERTY AND PUBLIC UTILITY BRANCH

APPROVED AS A TAX MAP PURSUANT TO THE PROVISIONS OF CHAPTER 175, LAWS OF 1913, ETC. FOR THE DIRECTOR, DIVISION OF TAXATION

J. H. DiStasio
P.E. & L.S.
SUPERINTENDENT

DATE DEC 8 1990 SERIAL NO. 899

TAX MAP
TOWNSHIP OF DENNIS
CAPE MAY COUNTY, NEW JERSEY
SCALE: 1"=100', APRIL 1, 1980
ALVIN C. HERMAN
NJ LIC. P.E. & L.S. NO. 13284
ALVIN C. HERMAN ASSOC. INC.
7 MECHANIC STREET
CAPE MAY COURT HOUSE, NJ 08210