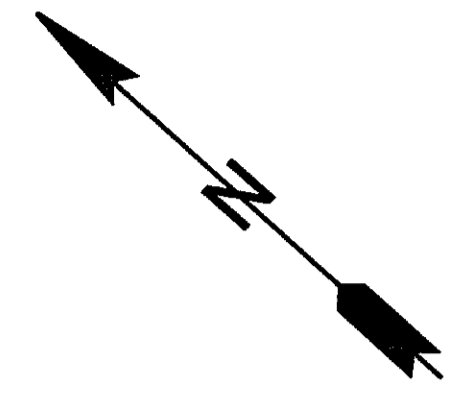
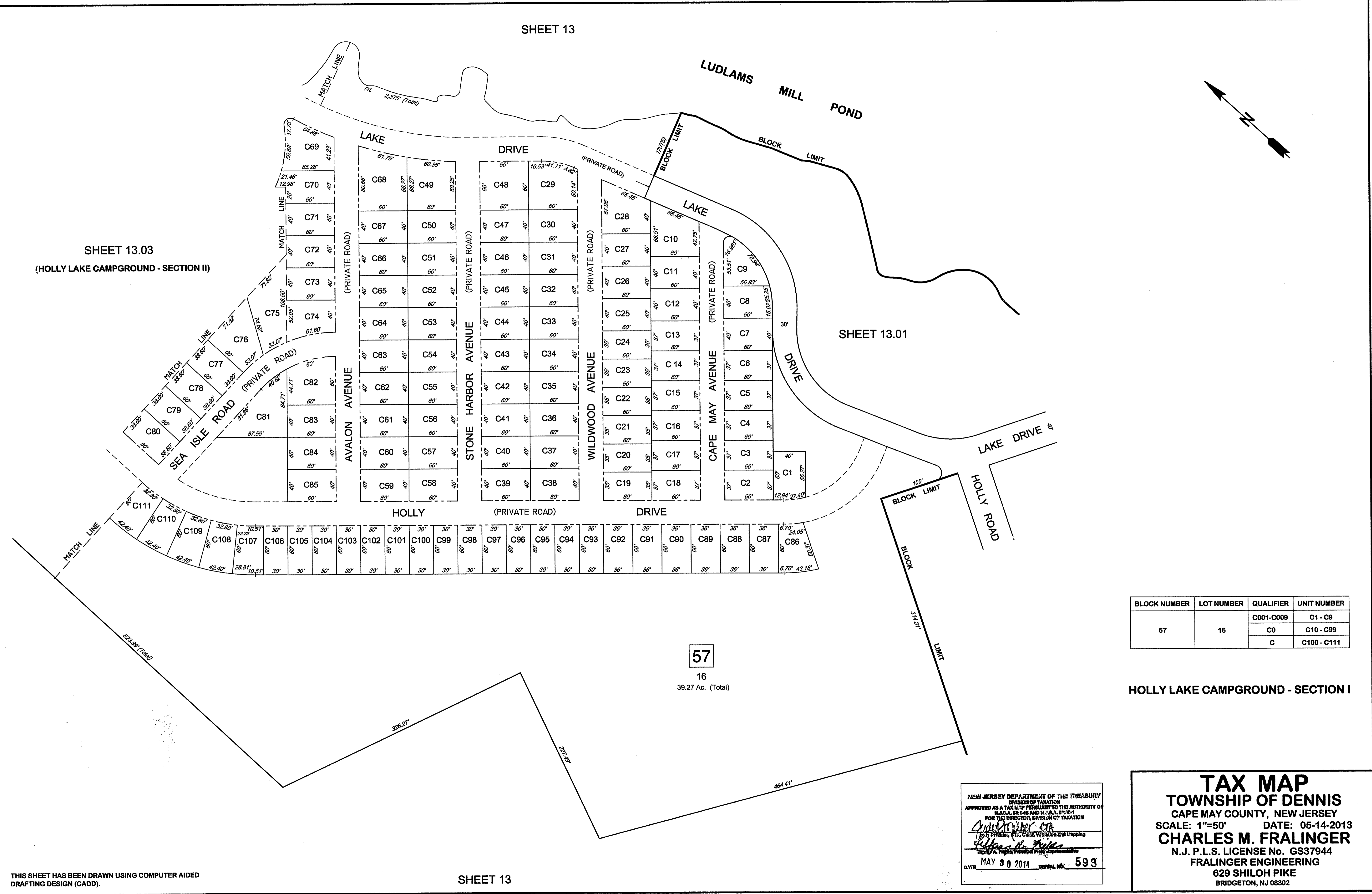


SHEET 13



SHEET 13.03  
(HOLLY LAKE CAMPGROUND - SECTION II)

SHEET 13.01



BLOCK NUMBER	LOT NUMBER	QUALIFIER	UNIT NUMBER
57	16	C001-C009	C1 - C9
		C0	C10 - C99
		C	C100 - C111

HOLLY LAKE CAMPGROUND - SECTION I

NEW JERSEY DEPARTMENT OF THE TREASURY  
 DIVISION OF TAXATION  
 APPROVED AS A TAX MAP PRESENTED TO THE AUTHORITY OF  
 N.J.S.A. 52:14 AND N.J.S.A. 52:27-1  
 FOR THE DIRECTOR, DIVISION OF TAXATION

*Andrew Miller, CPA*  
 (City Planner, City, Civil, Valuation and Mapping)

*Charles M. Fralinger*  
 (Professional Engineer)

DATE: MAY 30 2014 SERIAL NO. 593

**TAX MAP**  
**TOWNSHIP OF DENNIS**  
 CAPE MAY COUNTY, NEW JERSEY  
 SCALE: 1"=50' DATE: 05-14-2013  
**CHARLES M. FRALINGER**  
 N.J. P.L.S. LICENSE No. GS37944  
 FRALINGER ENGINEERING  
 629 SHILOH PIKE  
 BRIDGETON, NJ 08302

THIS SHEET HAS BEEN DRAWN USING COMPUTER AIDED DRAFTING DESIGN (CADD).

SHEET 13