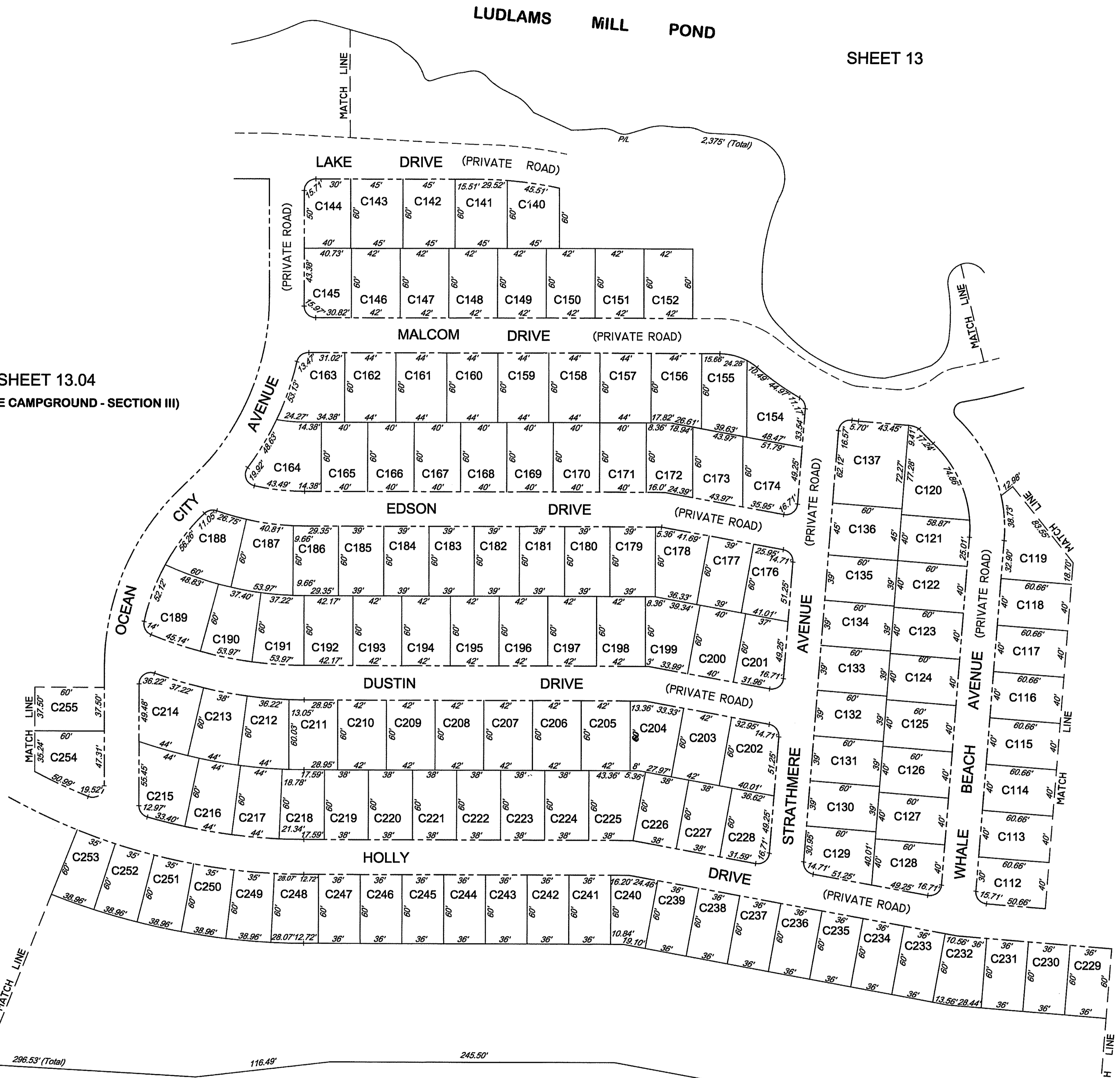


SHEET 13

SHEET 13.04
(HOLLY LAKE CAMPGROUND - SECTION III)

SHEET 13.02
(HOLLY LAKE CAMPGROUND - SECTION I)

SHEET 13



57
16
39.27 Ac. (Total)

BLOCK NUMBER	LOT NUMBER	QUALIFIER	UNIT NUMBER
57	16	C	C112 - C255

HOLLY LAKE CAMPGROUND - SECTION II

THIS SHEET HAS BEEN DRAWN USING COMPUTER AIDED DRAFTING DESIGN (CADD).

NEW JERSEY DEPARTMENT OF THE TREASURY
DIVISION OF TAXATION
APPROVED AS A TAX MAP PURSUANT TO THE AUTHORITY OF
N.J.S.A. 54:1-16 AND N.J.S.A. 54:2-4
FOR THE DIRECTOR, DIVISION OF TAXATION

Andrew J. Fralinger, Esq.
Principal, Fralinger Engineering, Inc.
Principal, Fralinger Engineering, Inc.

DATE: MAY 30 2014

TAX MAP
TOWNSHIP OF DENNIS
CAPE MAY COUNTY, NEW JERSEY
SCALE: 1"=50' DATE: 05-14-2013
CHARLES M. FRALINGER
N.J. P.L.S. LICENSE No. GS37944
FRALINGER ENGINEERING
629 SHILOH PIKE
BRIDGETON, NJ 08302