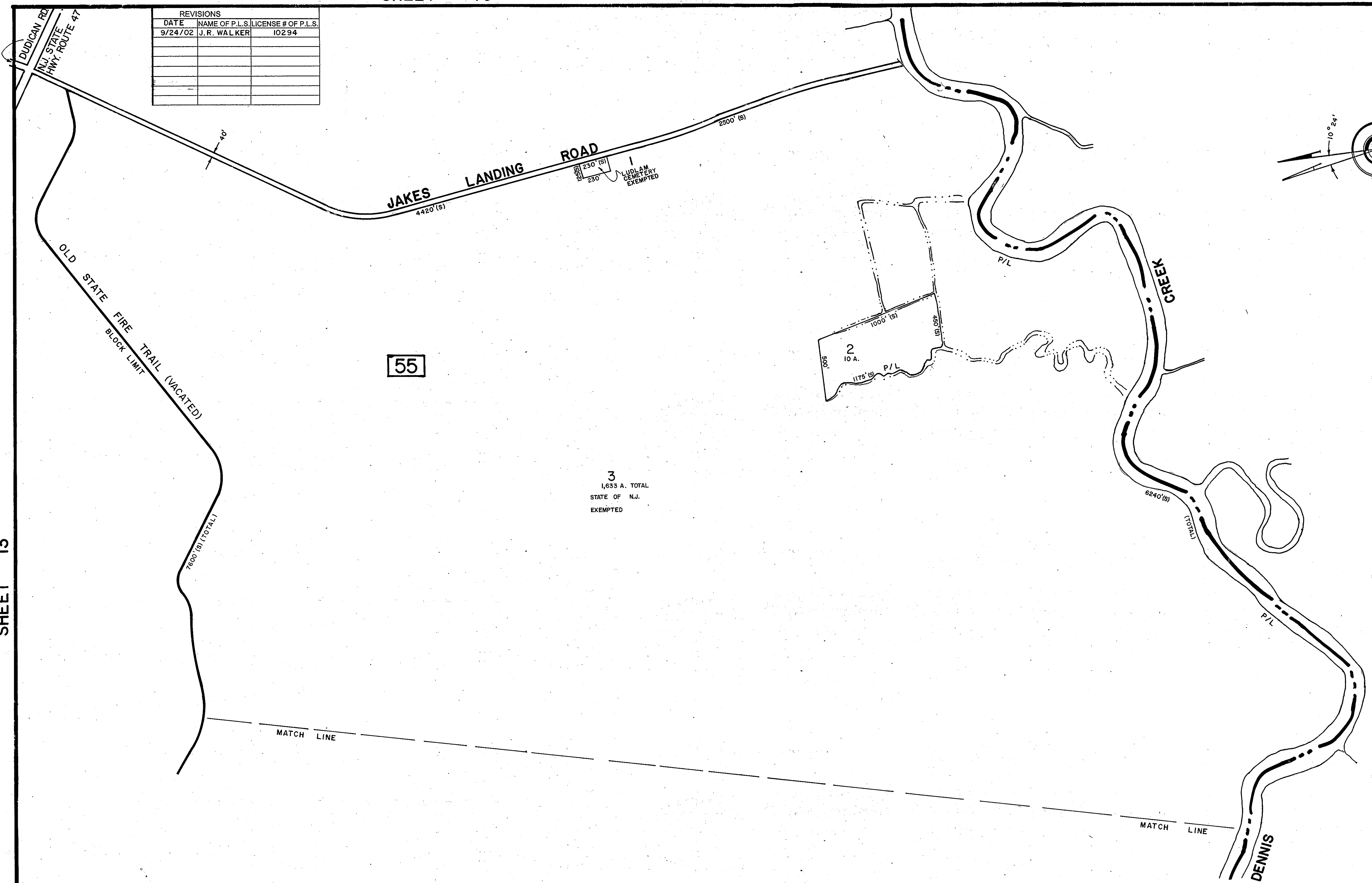
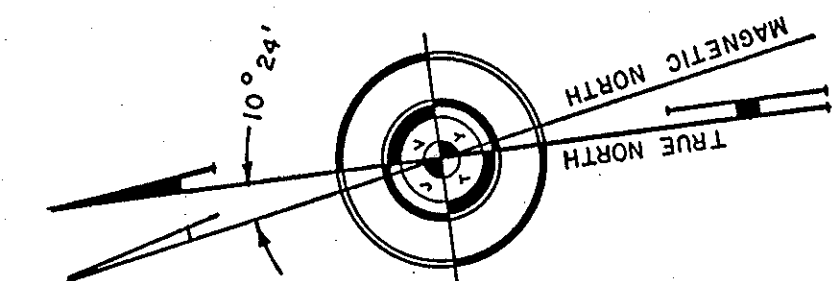


REVISIONS		
DATE	NAME OF P.L.S.	LICENSE # OF P.L.S.
9/24/02	J. R. WALKER	10294



SHEET 13

MIDDLE TOWNSHIP  
CAPE MAY COUNTY

2-20-89 KTA  
 NEW JERSEY DEPARTMENT OF THE TREASURY  
 DIVISION OF TAXATION  
 LOCAL PROPERTY AND PUBLIC UTILITY BRANCH  
 APPROVED AS A TAX MAP PURSUANT TO THE  
 PROVISIONS OF CHAPTER 178, LAWS OF 1913, ETC.  
 FOR THE DIRECTOR, DIVISION OF TAXATION  
*J. H. Williams*  
 BY Lic. #5009 SUPERINTENDENT  
 DATE DEC 8 1988 SERIAL NO. 598

REVISED 5-3-82 TAX MAP  
 TOWNSHIP OF DENNIS  
 CAPE MAY COUNTY, NEW JERSEY  
 SCALE: 1" = 400' APRIL 1, 1980  
 ALVIN C. HERMAN  
 NJ LIC. P.E. & L.S. NO. 13284  
 ALVIN C. HERMAN ASSOC. INC.  
 7 MECHANIC STREET  
 CAPE MAY COURT HOUSE, NJ 08210