

REVISIONS		
DATE	NAME OF P.L.S.	LICENSE # OF P.L.S.
9/24/02	J.R. WALKER	10294
9/3/04	J.R. WALKER	10294
1/20/05	J.R. WALKER	10294
10/23/06	B.A. GLEISSNER	34483
4/28/08	R. FARRAR	35836
6/23/10	R.T. HUGG	36737

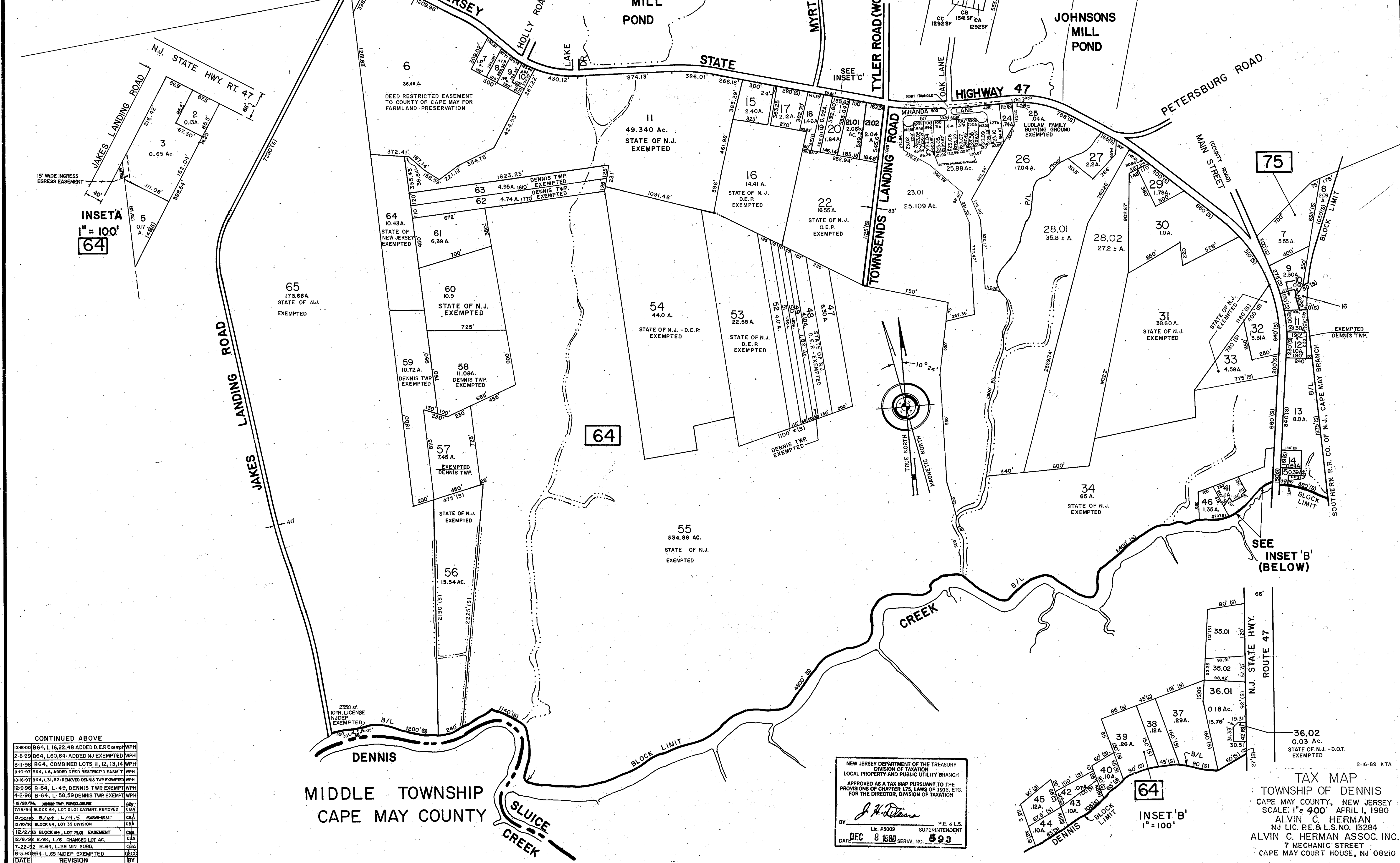
SHEET 13

SHEET 15

SHEET 15

SHEET 16.01

SHEET 20



**INSET A**  
1" = 100'  
64

**75**

**64**

**SEE INSET 'B' (BELOW)**

CONTINUED ABOVE

12-18-00	B-64, L-16, 22, 48 ADDED D.E.P. EXEMPT WPH	
2-8-99	B-64, L-60, 64 ADDED NJ EXEMPTED WPH	
8-11-98	B-64, COMBINED LOTS 11, 12, 13, 14 WPH	
11-10-97	B-64, L-6, ADDED DEED RESTRICTED EASMT WPH	
10-16-97	B-64, L-31, 32, REMOVED DENNIS TWP EXEMPTED WPH	
12-9-96	B-64, L-49, DENNIS TWP EXEMPT WPH	
4-2-96	B-64, L-58, 59 DENNIS TWP EXEMPT WPH	
12-28-74	OPENED TWP PARCELS	
2/18/74	BLOCK 64, LOT 81-91 EASEMENT REMOVED	CBA
12/20/73	B-64, L-74, 75 EASEMENT	CBA
12/20/73	BLOCK 64, LOT 35 DIVISION	CBA
12/2/73	BLOCK 64, LOT 21-31 EASEMENT	CBA
12/8/72	B-64, L-6, CHANGED LOT AC.	CBA
7-22-72	B-64, L-28 MIN. SUBD.	CBA
8-3-70	B-64, L-65 N.D.E.P. EXEMPTED	DECO
DATE	REVISION	BY

NEW JERSEY DEPARTMENT OF THE TREASURY  
DIVISION OF TAXATION  
LOCAL PROPERTY AND PUBLIC UTILITY BRANCH  
APPROVED AS A TAX MAP PURSUANT TO THE PROVISIONS OF CHAPTER 178, LAWS OF 1913, ETC. FOR THE DIRECTOR, DIVISION OF TAXATION

*J. N. DiStasio*  
BY SUPERINTENDENT P.E. & L.S.  
Lic. #5009  
DATE DEC 8 1980 SERIAL NO. 893

**INSET 'B'**  
1" = 100'

**64**

**TAX MAP**  
TOWNSHIP OF DENNIS  
CAPE MAY COUNTY, NEW JERSEY  
SCALE: 1" = 400' APRIL 1, 1980  
ALVIN C. HERMAN  
NJ LIC. P.E. & L.S. NO. 13284  
ALVIN C. HERMAN ASSOC. INC.  
7 MECHANIC STREET  
CAPE MAY COURT HOUSE, NJ 08210

2-16-89 KTA