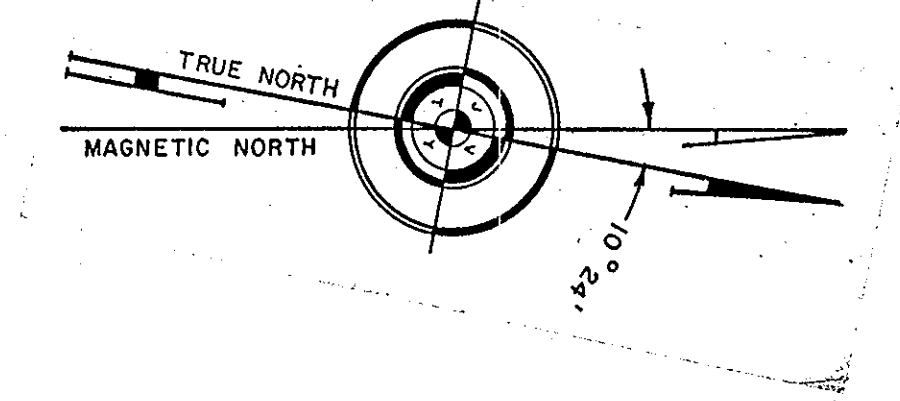


DATE	REVISION	BY
12-9-96	B-120, L-151, DENNIS TWP. EXEMPTED	WPHA
12-16-96	B120, L179 & B220 L1, U.S.A. EXEMPTED	WPHA
10-16-97	B120, L187, 13.54 was 14.68A (REV'D PER SURVEY)	WPHA
8-5-98	ADDED U.S.A. EXEMPT: B120/L219, 220/7, 221/1	WPHA
10-15-99	ADDED U.S.A. EXEMPTED: B120, LOTS 126, 129, 131, 133 THRU 139, 143, 144, 146, 147, 148, 151, 155, 157, 159, 163, 164, 167, 178, 180, REVISED ACREAGE: B120, LOTS 126, 129, 151, 157, 159, 178, & 180.	WPHA
12-18-01	B120, LOT 149, ADDED U.S.A. EXEMPTED.	WPHA

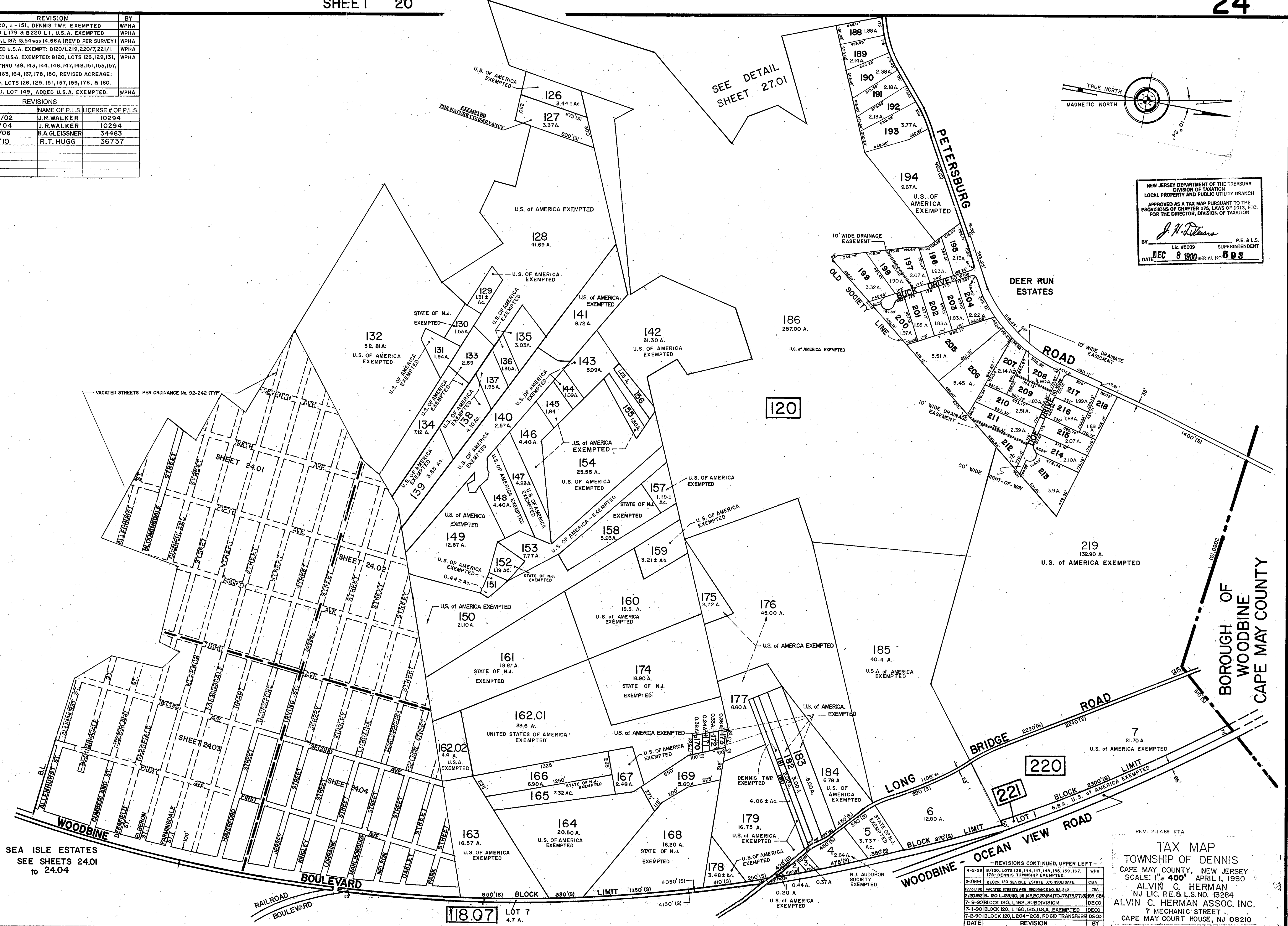
  

DATE	REVISIONS	NAME OF P.L.S.	LICENSE # OF P.L.S.
9/24/02		J.R.WALKER	10294
9/3/04		J.R.WALKER	10294
10/23/06		B.A.GLEISSNER	34483
6/23/10		R.T.HUGG	36737



NEW JERSEY DEPARTMENT OF THE TREASURY  
 DIVISION OF TAXATION  
 LOCAL PROPERTY AND PUBLIC UTILITY BRANCH  
 APPROVED AS A TAX MAP PURSUANT TO THE  
 PROVISIONS OF CHAPTER 175, LAWS OF 1913, ETC.  
 FOR THE DIRECTOR, DIVISION OF TAXATION

*J. H. Williams*  
 BY: Lic. #5009 SUPERINTENDENT  
 DATE: DEC 8 1990 SERIAL NO. 593



SHEET 23

SHEET 21

SEA ISLE ESTATES  
 SEE SHEETS 24.01  
 to 24.04

REV-2-17-89 KTA

TAX MAP  
 TOWNSHIP OF DENNIS  
 CAPE MAY COUNTY, NEW JERSEY  
 SCALE: 1" = 400' APRIL 1, 1990  
 ALVIN C. HERMAN  
 NJ LIC. RE. & L.S. NO. 13284  
 ALVIN C. HERMAN ASSOC. INC.  
 7 MECHANIC STREET  
 CAPE MAY COURT HOUSE, NJ 08210

REVISIONS CONTINUED, UPPER LEFT -

DATE	REVISION	BY
4-2-90	B120, LOTS 126, 144, 147, 148, 155, 159, 167, 178, DENNIS TOWNSHIP EXEMPTED.	WPHA
2-23-94	BLOCK 120 SEA ISLE ESTATE CO CONSOLIDATE	CBA
12/21/94	VACATED STREETS PER ORDINANCE NO. 82-242	CBA
2/20/99	B-120 L-188MO, M145250235470-173751778283 CBA	CBA
7-19-00	BLOCK 120, L162, SUBDIVISION	DECO
7-11-00	BLOCK 120, L160, 185, U.S.A. EXEMPTED	DECO
7-2-00	BLOCK 120, L204-206, ROAD TRANSFER DEC'D	DECO

SHEET 27

SHEET 25