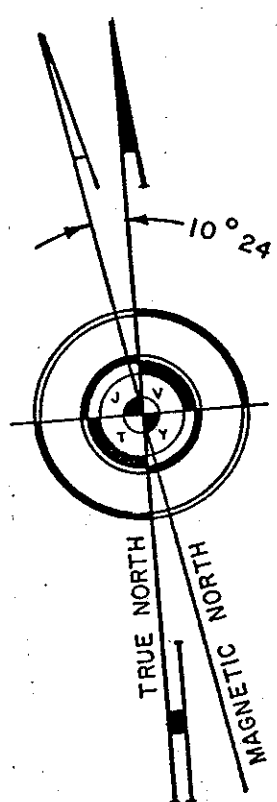
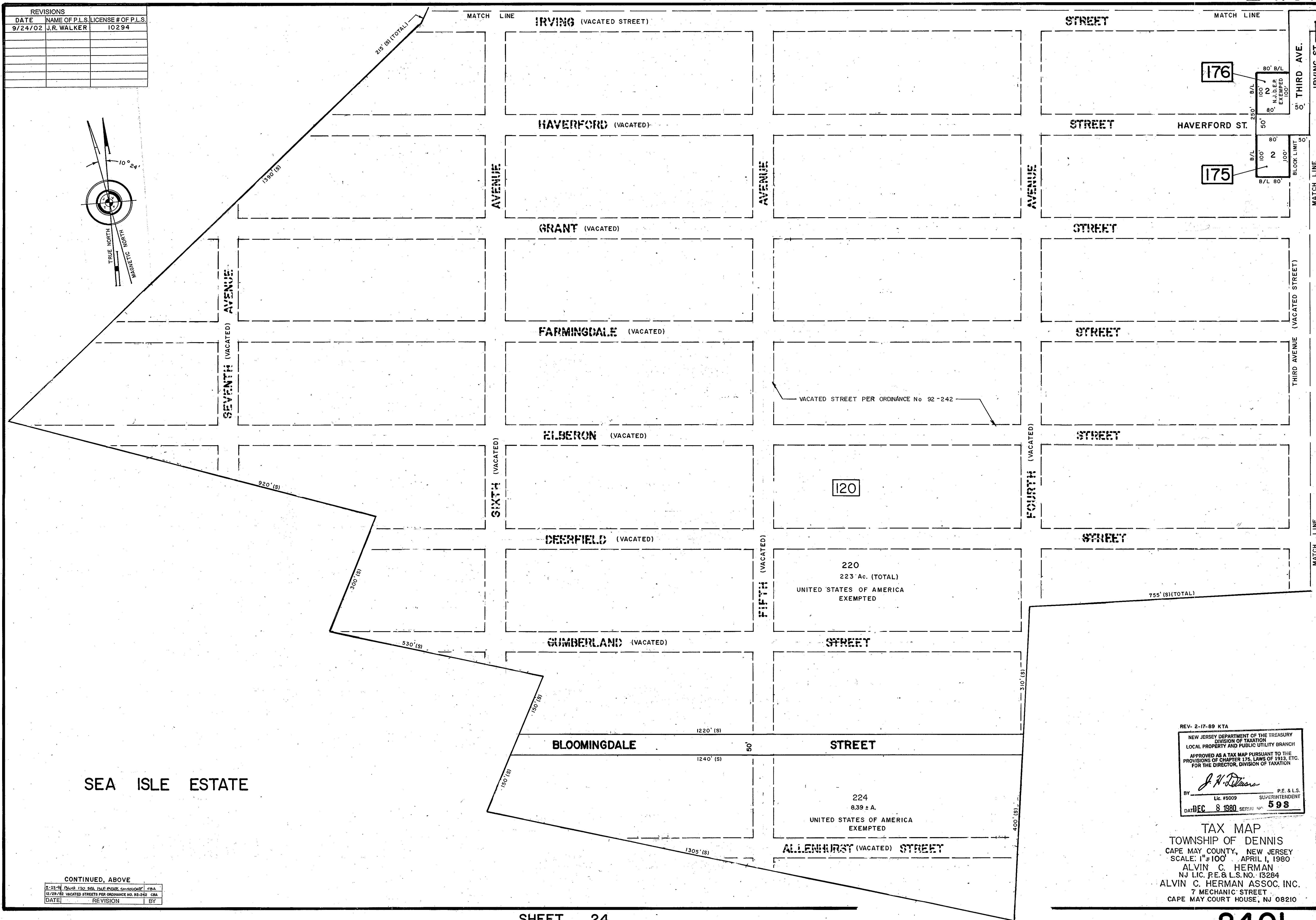


REVISIONS		
DATE	NAME OF P.L.S.	LICENSE # OF P.L.S.
9/24/02	J.R. WALKER	10294



SHEET 24



SHEET 24.03

SEA ISLE ESTATE

CONTINUED, ABOVE		
DATE	REVISION	BY
12/29/80	VACATED STREETS PER ORDINANCE NO. 92-242	CBA

REV- 2-17-89 KTA

NEW JERSEY DEPARTMENT OF THE TREASURY  
DIVISION OF TAXATION  
LOCAL PROPERTY AND PUBLIC UTILITY BRANCH

APPROVED AS A TAX MAP PURSUANT TO THE PROVISIONS OF CHAPTER 175, LAWS OF 1980, ETC. FOR THE DIRECTOR, DIVISION OF TAXATION

*J. H. [Signature]*  
SUPERINTENDENT

BY Lic. #5009 SUPERINTENDENT  
DATE DEC 8 1980 SERIAL NO. 598

TAX MAP  
TOWNSHIP OF DENNIS  
CAPE MAY COUNTY, NEW JERSEY  
SCALE: 1" = 100' APRIL 1, 1980  
ALVIN C. HERMAN  
NJ LIC. P.E. & L.S. NO. 13284  
ALVIN C. HERMAN ASSOC. INC.  
7 MECHANIC STREET  
CAPE MAY COURT HOUSE, NJ 08210