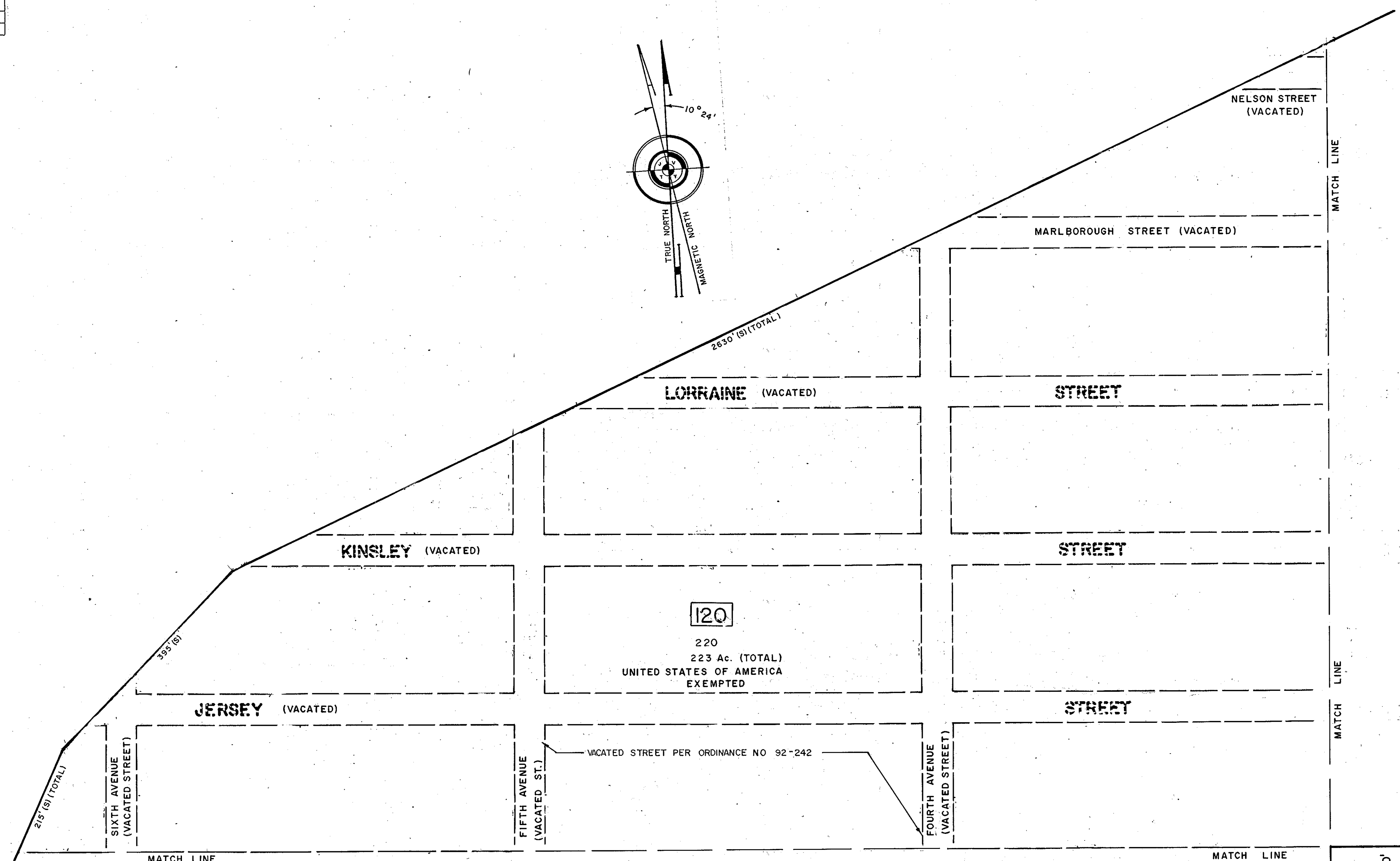
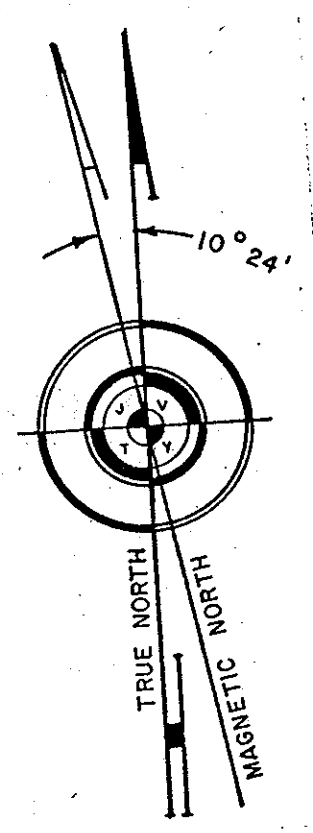


REVISIONS		
DATE	NAME OF P.L.S.	LICENSE # OF P.L.S.
9/24/02	J.R.WALKER	10294



SHEET 24

SHEET 24.04

SEA ISLE ESTATES

CONTINUED, ABOVE			
DATE	REVISION	BY	
2-23-74	Block 120, SEA ISLE ESTATES CONSOLIDATE	CBA	
12/29/82	VACATED STREETS PER ORDINANCE NO. 92-242	CBA	

NEW JERSEY DEPARTMENT OF THE TREASURY  
 DIVISION OF TAXATION  
 LOCAL PROPERTY AND PUBLIC UTILITY BRANCH  
 APPROVED AS A TAX MAP PURSUANT TO THE  
 PROVISIONS OF CHAPTER 175, LAWS OF 1913, ETC.  
 FOR THE DIRECTOR, DIVISION OF TAXATION  
*J. H. Williams*  
 BY: Lic. #5009 SUPERINTENDENT  
 DATE: DEC 8 1980 SERIAL NO. 598

REV. 2-17-89 KTA  
 TAX MAP  
 TOWNSHIP OF DENNIS  
 CAPE MAY COUNTY, NEW JERSEY  
 SCALE: 1"=100' APRIL 1, 1980  
 ALVIN C. HERMAN  
 N.J. LIC. P.E. & L.S. NO. 13284  
 ALVIN C. HERMAN ASSOC. INC.  
 7 MECHANIC STREET  
 CAPE MAY COURT HOUSE, NJ 08210