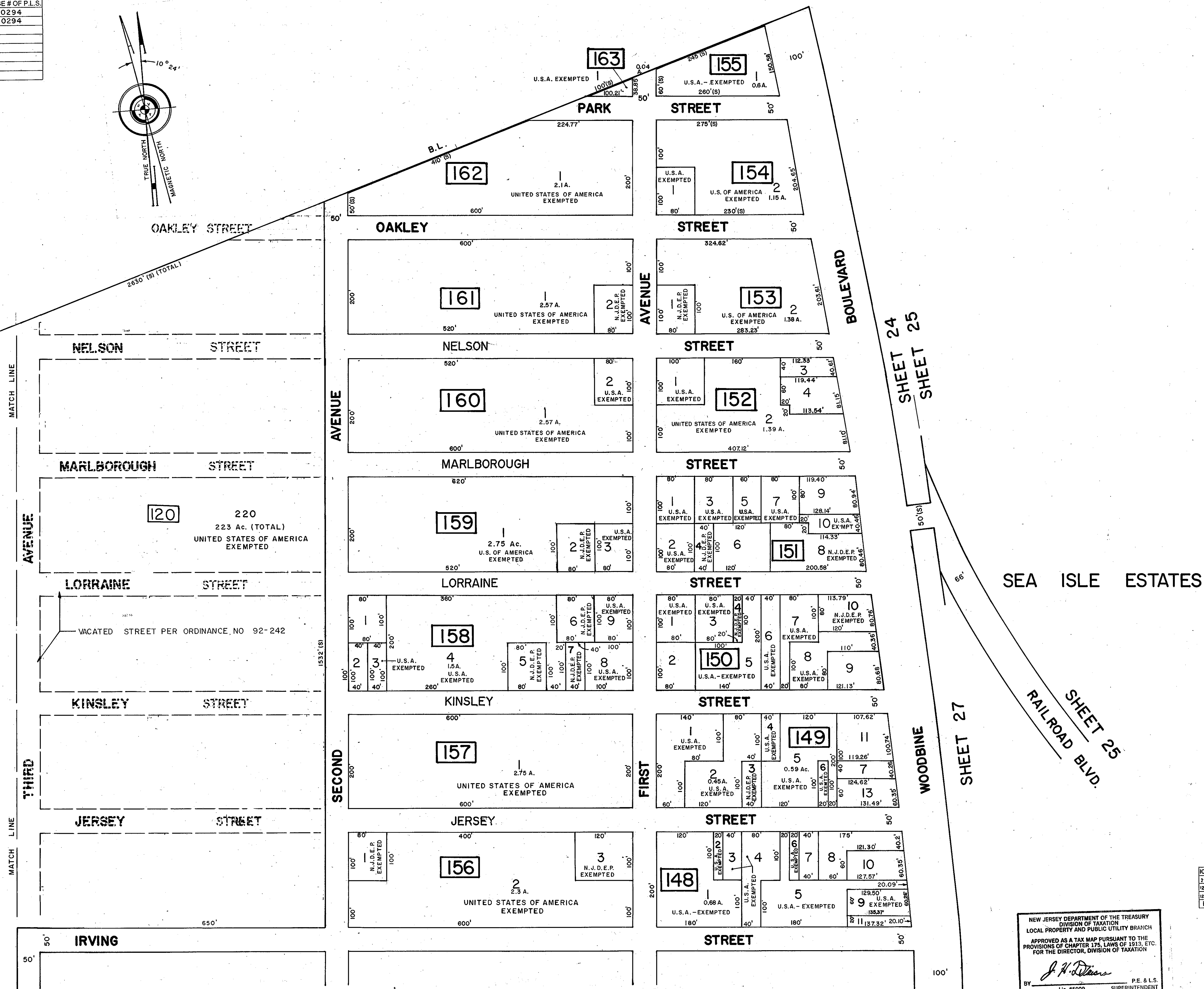
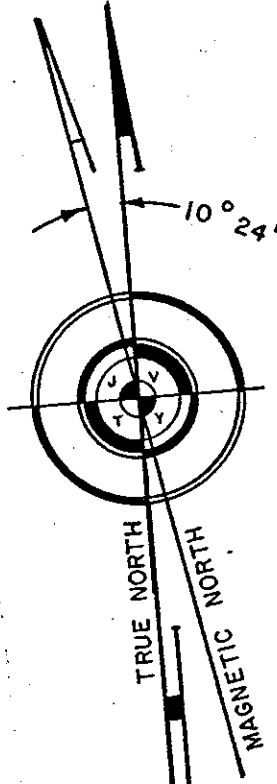


REVISIONS		
DATE	NAME OF P.L.S.	LICENSE # OF P.L.S.
9/24/02	J.R. WALKER	10294
9/3/04	J.R. WALKER	10294



SHEET 24.02

SHEET 24
SHEET 25

SEA ISLE ESTATES

WOODBINE
SHEET 27
RAILROAD BLVD.
SHEET 25

DATE	REVISION	BY
10-16-97	B149: ADDED LOTS 11 & 13	WPH
2/25/94	REVISION 122 56A 1st & 2nd ST. CONSOLIDATE	CSA
12/2/93	BLOCK 148 LOT 9 SUBD.	CSA
12/22/92	VACATED STREETS PER ORDINANCE NO. 92-242	CSA

NEW JERSEY DEPARTMENT OF THE TREASURY
DIVISION OF TAXATION
LOCAL PROPERTY AND PUBLIC UTILITY BRANCH
APPROVED AS A TAX MAP PURSUANT TO THE
PROVISIONS OF CHAPTER 175, LAWS OF 1913, ETC.
FOR THE DIRECTOR, DIVISION OF TAXATION

J. H. Deane
P.E. & L.S.
Lic. #5009 SUPERINTENDENT
DEC 8 1980 SERIAL NO. 893

REV-2-17-89 KTA
TAX MAP
TOWNSHIP OF DENNIS
CAPE MAY COUNTY, NEW JERSEY
SCALE: 1"=100' APRIL 1, 1980
ALVIN C. HERMAN
NJ LIC. P.E. & L.S. NO. 13284
ALVIN C. HERMAN ASSOC. INC.
7 MECHANIC STREET
CAPE MAY COURT HOUSE, NJ 08210