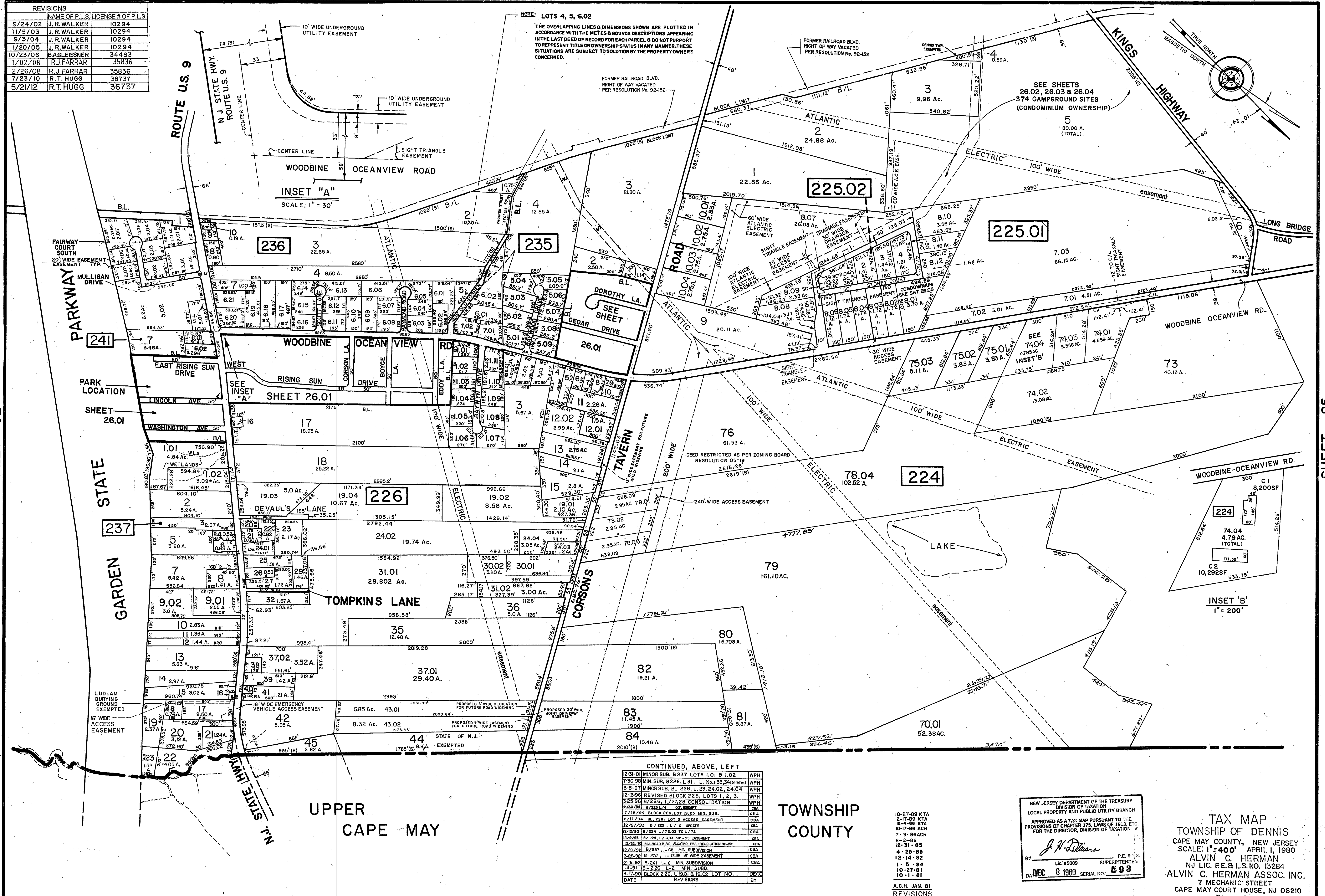


REVISIONS		
DATE	NAME OF P.L.S.	LICENSE # OF P.L.S.
9/24/02	J.R. WALKER	10294
11/5/03	J.R. WALKER	10294
9/3/04	J.R. WALKER	10294
1/20/05	J.R. WALKER	10294
10/23/06	B.AGLEISSNER	34483
1/02/08	R.J.FARRAR	35836
2/26/08	R.J.FARRAR	35836
7/23/10	R.T. HUGG	36737
5/21/12	R.T. HUGG	36737

NOTE: LOTS 4, 5, 6, 02
 THE OVERLAPPING LINES & DIMENSIONS SHOWN ARE PLOTTED IN ACCORDANCE WITH THE METES & BOUNDS DESCRIPTIONS APPEARING IN THE LAST DEED OF RECORD FOR EACH PARCEL & DO NOT PURPORT TO REPRESENT TITLE OR OWNERSHIP STATUS IN ANY MANNER. THESE SITUATIONS ARE SUBJECT TO SOLUTION BY THE PROPERTY OWNERS CONCERNED.



INSET "A"
 SCALE: 1" = 30'

INSET "B"
 1" = 200'

SHEET 32

SHEET 25

CONTINUED, ABOVE, LEFT

12-31-01 MINOR SUB. B 237 LOTS 1.01 & 1.02	WPH	
7-30-98 MIN. SUB. B 226, L 31. L. Nos 33, 34 Deleted	WPH	
3-5-97 MINOR SUB. BL 226, L 23, 24, 02, 24, 04	WPH	
12-13-96 REVISED BLOCK 225, LOTS 1, 2, 3.	WPH	
3-25-96 B/225, L/27, 28 CONSOLIDATION	WPH	
3-29-91 B/225, L/2, 3, 4, 5, 6, 7, 8, 9, 10, 11, 12, 13, 14, 15, 16, 17, 18, 19, 20, 21, 22, 23, 24, 25, 26, 27, 28, 29, 30, 31, 32, 33, 34, 35, 36, 37, 38, 39, 40, 41, 42, 43, 44, 45, 46, 47, 48, 49, 50, 51, 52, 53, 54, 55, 56, 57, 58, 59, 60, 61, 62, 63, 64, 65, 66, 67, 68, 69, 70, 71, 72, 73, 74, 75, 76, 77, 78, 79, 80, 81, 82, 83, 84, 85, 86, 87, 88, 89, 90, 91, 92, 93, 94, 95, 96, 97, 98, 99, 100	CBA	
7-18-94 BLOCK 226 LOT 19.03 MIN. SUB.	CBA	
2-17-94 BL. 226, LOT 3 ACCESS EASEMENT	CBA	
12-27-93 B/225, L/6 UPDATE	CBA	
12/26/93 B/224 L/7, 8, 9 TO L/7, 8	CBA	
12/23/93 B/225 L/1, 2, 3, 4, 5, 6, 7, 8, 9, 10, 11, 12, 13, 14, 15, 16, 17, 18, 19, 20, 21, 22, 23, 24, 25, 26, 27, 28, 29, 30, 31, 32, 33, 34, 35, 36, 37, 38, 39, 40, 41, 42, 43, 44, 45, 46, 47, 48, 49, 50, 51, 52, 53, 54, 55, 56, 57, 58, 59, 60, 61, 62, 63, 64, 65, 66, 67, 68, 69, 70, 71, 72, 73, 74, 75, 76, 77, 78, 79, 80, 81, 82, 83, 84, 85, 86, 87, 88, 89, 90, 91, 92, 93, 94, 95, 96, 97, 98, 99, 100	CBA	
12-23-24 BARRAD ROAD VACATED PER RESOLUTION 92-102	CBA	
12-23-24 B/237, L/3 MIN. SUBDIVISION	CBA	
2-28-92 B-237, L-7-19 1/2 WIDE EASEMENT	CBA	
2-18-52 B-241, L-6 MIN. SUBDIVISION	CBA	
11-31-19 B-226 L-2 MIN. SUBD.	CBA	
9-17-90 BLOCK 226, L 19.01 & 19.02 LOT NO.	DECD	
DATE	REVISIONS	BY

TOWNSHIP
 COUNTY

10-27-89 KTA
 2-17-89 KTA
 12-4-88 KTA
 10-17-86 ACH
 7-9-86 ACH
 6-5-86
 12-31-85
 4-25-85
 12-14-82
 1-5-84
 10-27-81
 10-1-81

NEW JERSEY DEPARTMENT OF THE TREASURY
 DIVISION OF TAXATION
 LOCAL PROPERTY AND PUBLIC UTILITY BRANCH
 APPROVED AS A TAX MAP PURSUANT TO THE
 PROVISIONS OF CHAPTER 175, LAWS OF 1973, ETC.
 FOR THE DIRECTOR, DIVISION OF TAXATION

J. H. DiStasio

BY: Lic. #5009 SUPERINTENDENT
 DATE: DEC 8 1980 SERIAL NO. 593

TAX MAP
 TOWNSHIP OF DENNIS
 CAPE MAY COUNTY, NEW JERSEY
 SCALE: 1" = 400' APRIL 1, 1980
 ALVIN C. HERMAN
 NJ LIC. R.E. & L.S. NO. 13284
 ALVIN C. HERMAN ASSOC. INC.
 7 MECHANIC STREET
 CAPE MAY COURT HOUSE, NJ 08210