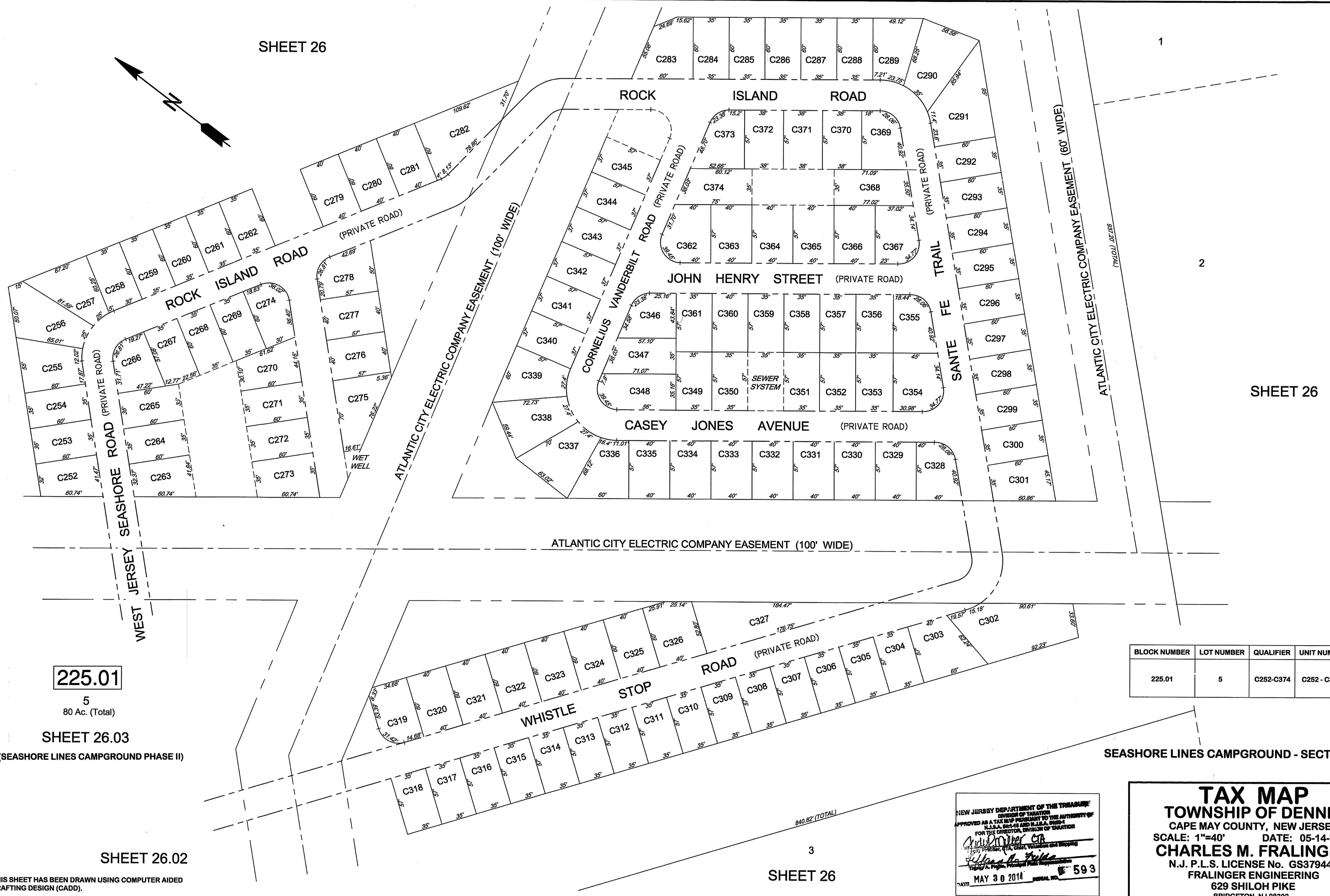
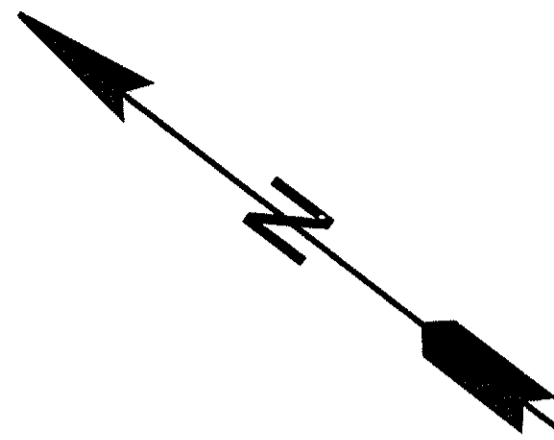


SHEET 26



SHEET 26

225.01

5  
80 Ac. (Total)

SHEET 26.03

(SEASHORE LINES CAMPGROUND PHASE II)

SHEET 26.02

THIS SHEET HAS BEEN DRAWN USING COMPUTER AIDED DRAFTING DESIGN (CADD).

BLOCK NUMBER	LOT NUMBER	QUALIFIER	UNIT NUMBER
225.01	5	C252-C374	C252 - C374

SEASHORE LINES CAMPGROUND - SECTION III

NEW JERSEY DEPARTMENT OF THE TREASURY  
 DIVISION OF TAXATION  
 APPROVED AS A TAX MAP PURSUANT TO THE AUTHORITY OF  
 N.J.S.A. 54:1-48 AND N.J.S.A. 54:1-49  
 FOR THE DIRECTOR, DIVISION OF TAXATION

*Andrew J. Fralinger, C.E.*  
 Surveyor, P.E., Civil, Mechanical and Mapping

*William R. Fralinger*  
 Surveyor, P.E., Mechanical and Mapping

DATE: MAY 30 2014 SERIAL NO. 593

**TAX MAP**  
**TOWNSHIP OF DENNIS**  
 CAPE MAY COUNTY, NEW JERSEY  
 SCALE: 1"=40' DATE: 05-14-2013  
**CHARLES M. FRALINGER**  
 N.J. P.L.S. LICENSE No. GS37944  
 FRALINGER ENGINEERING  
 629 SHILOH PIKE  
 BRIDGETON, NJ 08302

SHEET 26