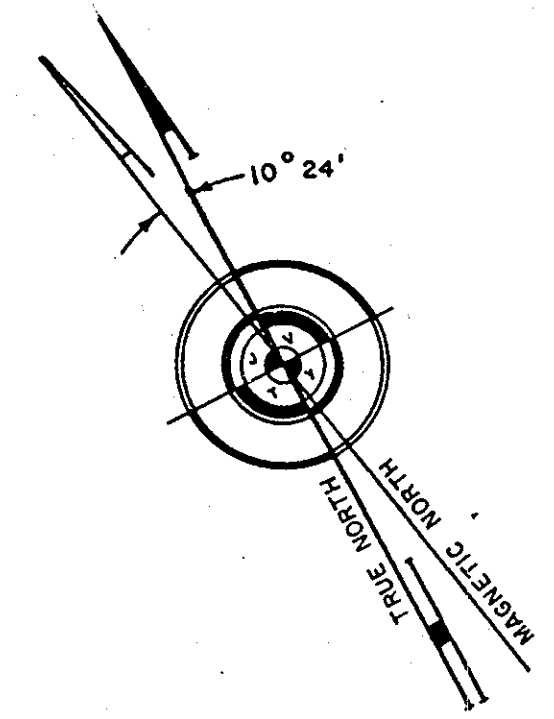
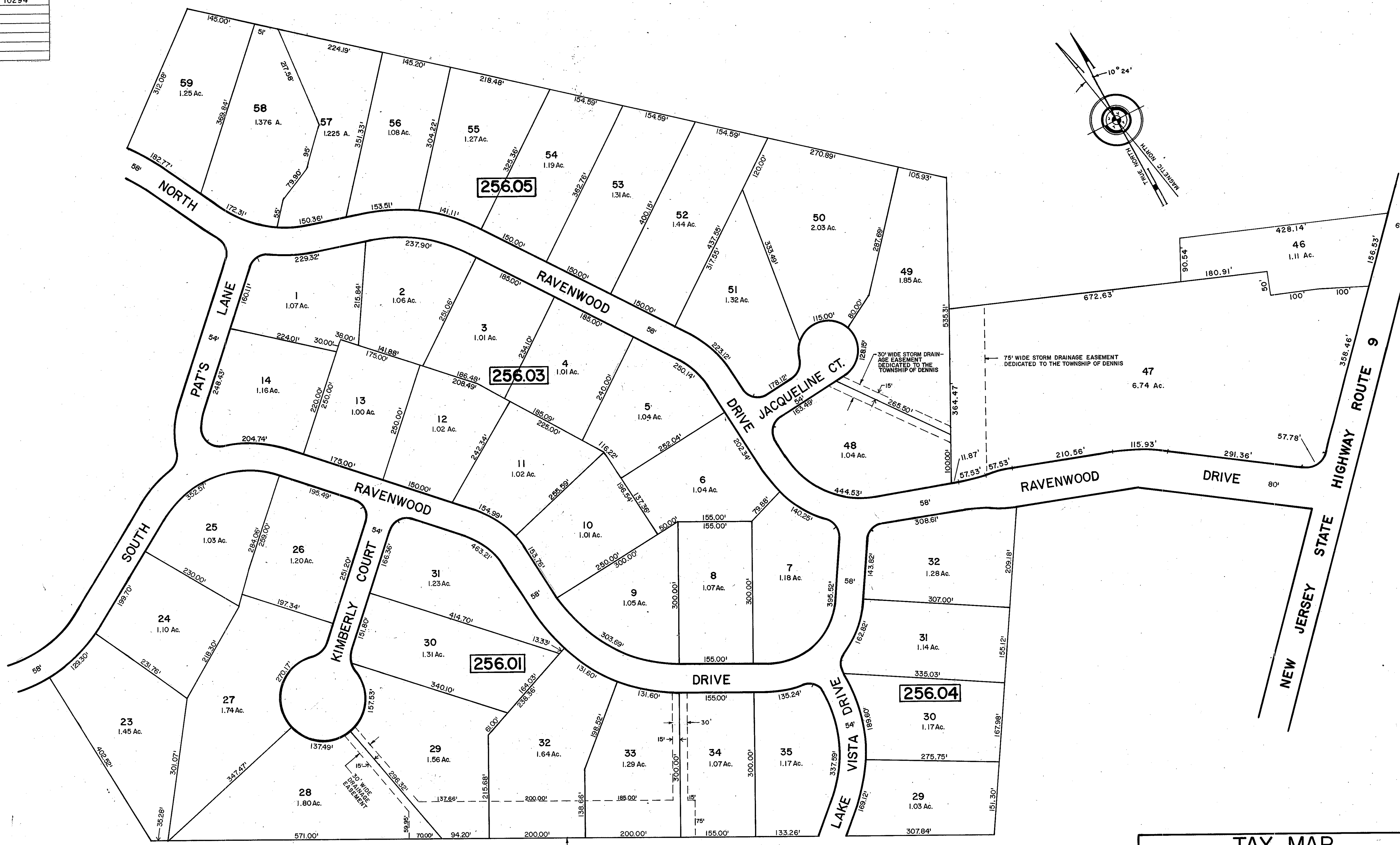


SHEET 28

REVISIONS		
DATE	NAME OF P.L.S.	LICENSE # OF P.L.S.
9/24/02	J.R. WALKER	10294
9/3/04	J.R. WALKER	10294



SHEET 28.02

SHEET 28

DATE	REVISION	BY
10-16-97	B256.05, L 46 & 47, SUBDIVISION	WPH

SHEET 28

REVISIONS
10-17-86

NEW JERSEY DEPARTMENT OF THE TREASURY
DIVISION OF TAXATION
LOCAL PROPERTY AND PUBLIC UTILITY BRANCH
APPROVED AS A TAX MAP PURSUANT TO THE
PROVISIONS OF CHARTER 175, LAWS OF 1913, ETC.
FOR THE DIRECTOR, DIVISION OF TAXATION

Gary L. Thomas
BY: *Gary L. Thomas* P.E. & L.S.
L.C. #15434 CHIEF, ENGINEERING SECTION
DATE JUN 02 1998 SERIAL NO. 593

TAX MAP
TOWNSHIP OF DENNIS
CAPE MAY COUNTY, NEW JERSEY
SCALE: 1"=100' DATE: 12-31-85

GARY L. THOMAS, N.J.L.S. NO. 23921
KONA · THOMAS & ASSOC.
2709 DUNE DRIVE, SUITE 6
AVALON, NEW JERSEY 08202
CHARLES KONA, N.J.P.E. NO 25814
MUNICIPAL ENGINEER