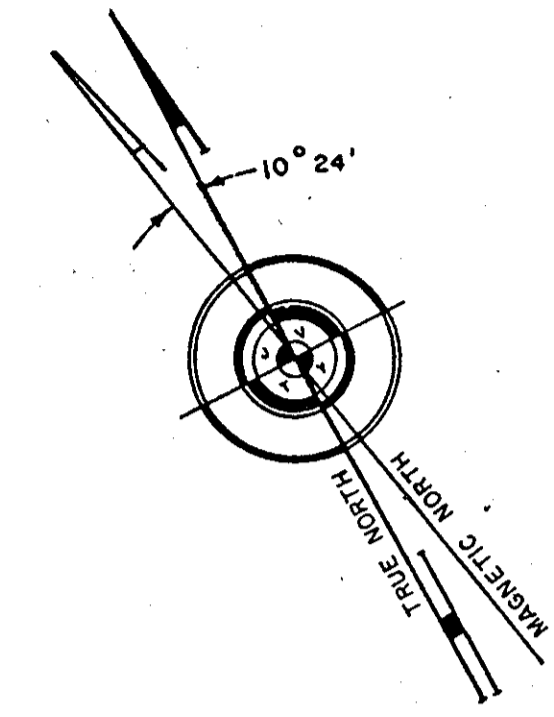
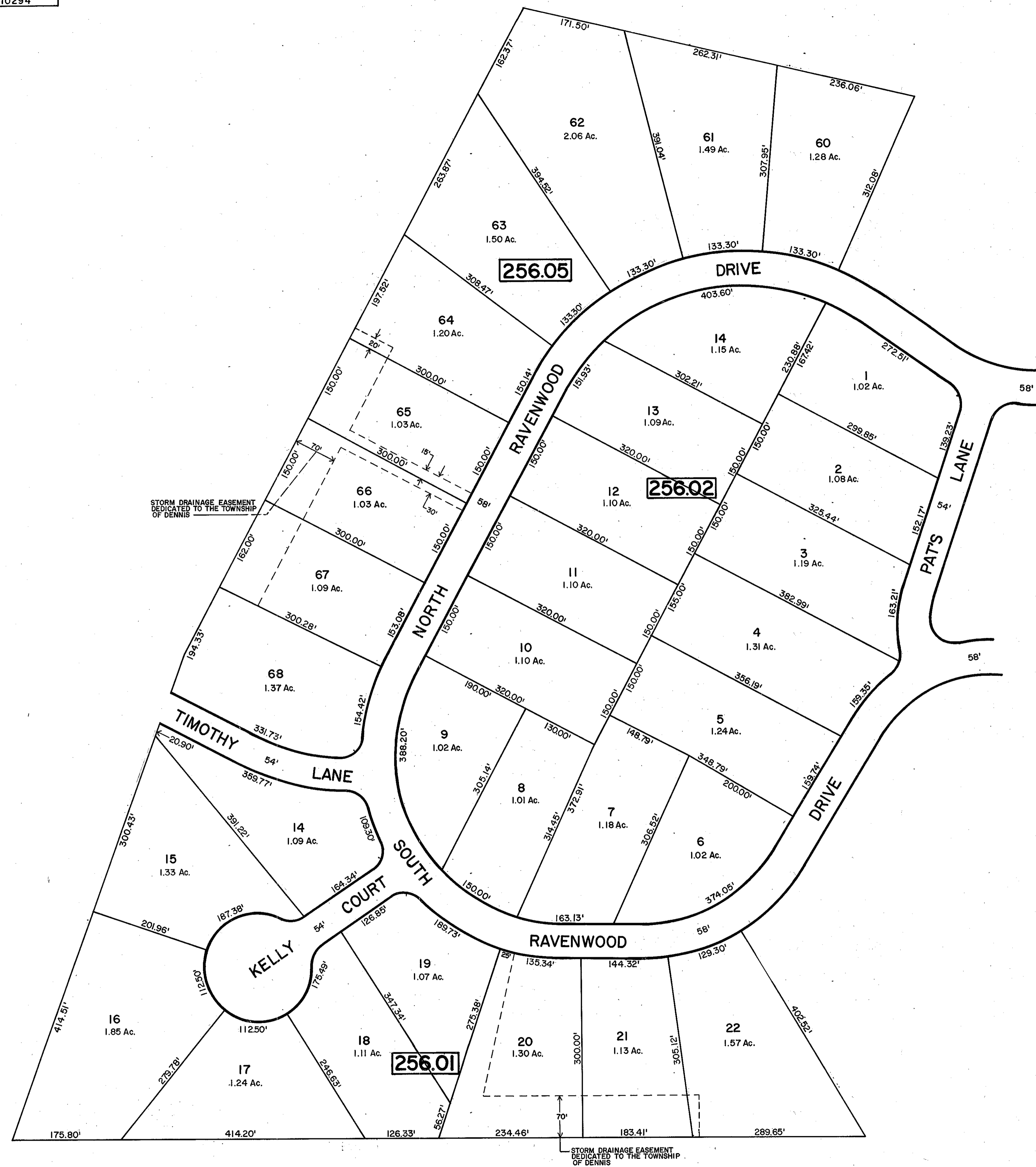


REVISIONS		
DATE	NAME OF P.L.S.	LICENSE # OF P.L.S.
9/3/04	J.R. WALKER	10294

SHEET 28



SHEET 28

SHEET 28.01

SHEET 28

TAX MAP
TOWNSHIP OF DENNIS
 CAPE MAY COUNTY, NEW JERSEY
 SCALE: 1"=100' DATE: 12-31-85

GARY L. THOMAS, N.J.L.S. NO. 23921
KONA · THOMAS & ASSOC.
 2709 DUNE DRIVE, SUITE 6
 AVALON, NEW JERSEY 08202
 CHARLES KONA, N.J.P.E. NO. 25814
 MUNICIPAL ENGINEER

NEW JERSEY DEPARTMENT OF THE TREASURY
 DIVISION OF TAXATION
 LOCAL PROPERTY AND PUBLIC UTILITY BRANCH
 APPROVED AS A TAX MAP PURSUANT TO THE
 PROVISIONS OF CHAPTER 175, LAWS OF 1913, ETC.
 FOR THE DIRECTOR, DIVISION OF TAXATION

Gary L. Thomas
 BY: P.E. & L.S.
 LIC. #18434 CHIEF ENGINEERING SECTION
 DATE JUN 02 1986 SERIAL NO. 303