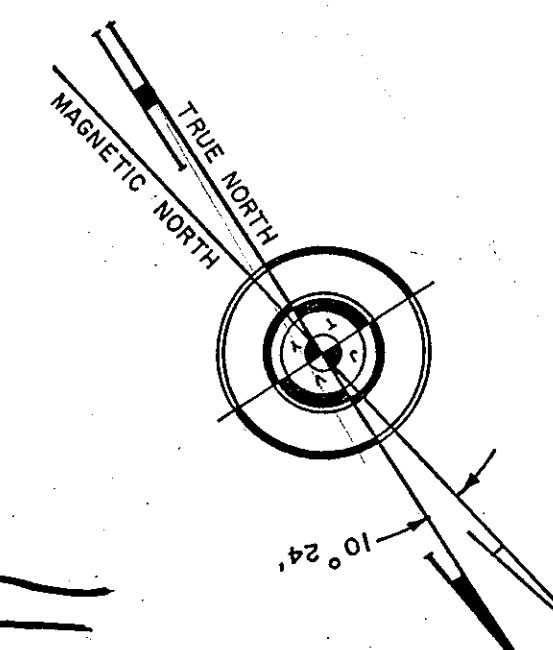
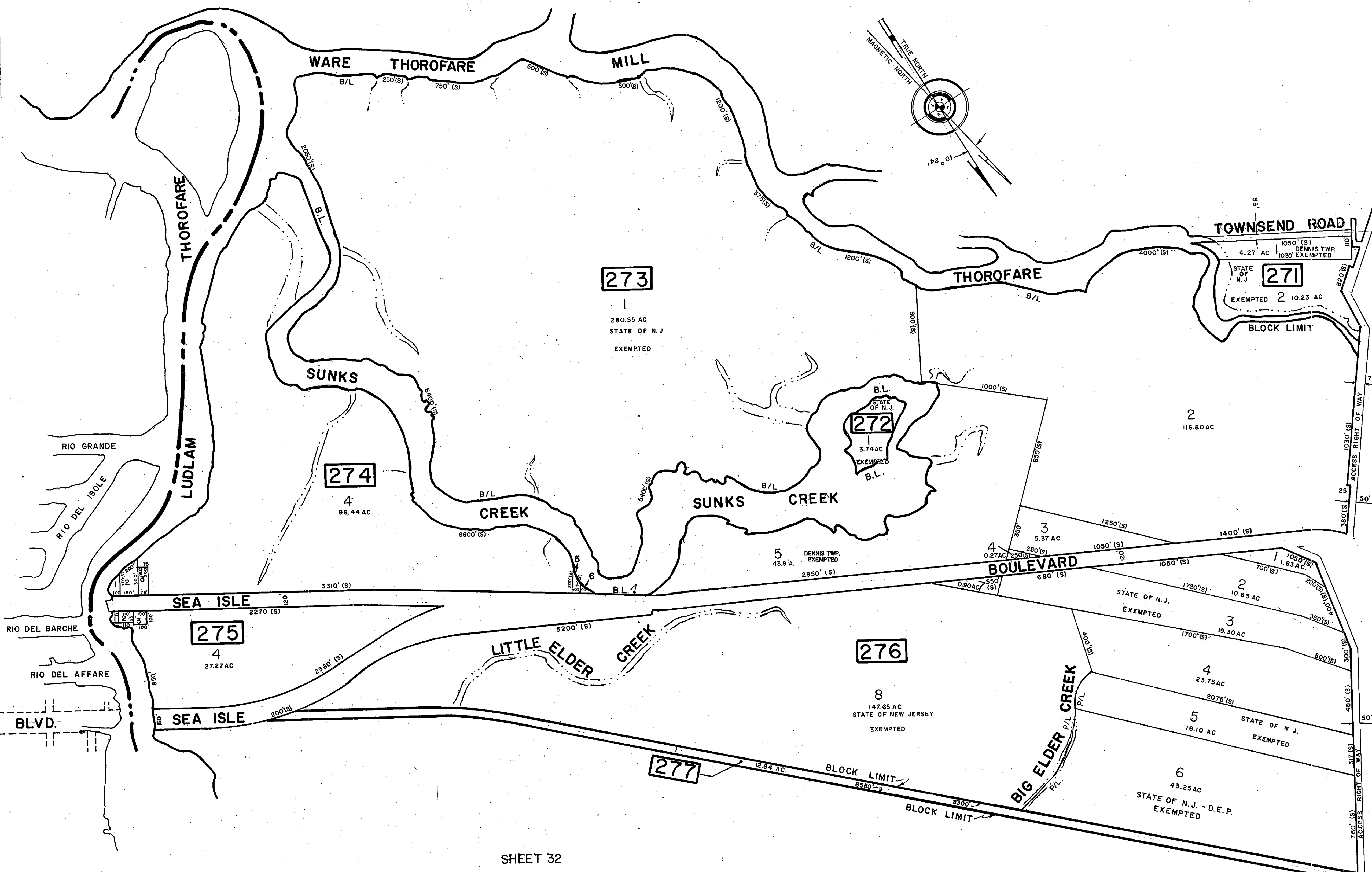


REVISIONS		
DATE	NAME OF P.L.S.	LICENSE # OF P.L.S.
9/24/02	J.R. WALKER	10294
9/3/04	J.R. WALKER	10294

SEA ISLE CITY
CAPE MAY COUNTY



JOHN F. KENNEDY BLVD.

SHEET 32

CONTINUED ABOVE LEFT

DATE	REVISION	BY
1-25-01	276, L/S: NJ - DEP EXEMPTED	WPN
4-2-98	271, L/S: DENNIS TWP EXEMPTED	WPN
12/30/04	273, L/S: ST. EXEMPT	WPN

NEW JERSEY DEPARTMENT OF THE TREASURY
DIVISION OF TAXATION
LOCAL PROPERTY AND PUBLIC UTILITY BRANCH
APPROVED AS A TAX MAP PURSUANT TO THE
PROVISIONS OF CHAPTER 175, LAWS OF 1915, ETC.
FOR THE DIRECTOR, DIVISION OF TAXATION

J. N. DeLeon
BY: Lic. #5009 SUPERINTENDENT P.E. & L.S.
DATE: 8 1980 SERIAL NO. 593

REVISED 5-3-82

TAX MAP
TOWNSHIP OF DENNIS
CAPE MAY COUNTY, NEW JERSEY
SCALE: 1" = 400' APRIL 1, 1980
ALVIN C. HERMAN
NJ LIC. P.E. & L.S. NO. 13284
ALVIN C. HERMAN ASSOC. INC.
7 MECHANIC STREET
CAPE MAY COURT HOUSE, NJ 08210

SHEET 27