

# Shropshire|Associates LLC

Traffic Engineering  
Noise & Air Evaluations  
Eminent Domain Consulting  
Transportation Planning  
Parking Studies  
Access Permitting  
Traffic Signal Design

662 MAIN STREET, SUITE B  
LUMBERTON, NJ 08048

DAVID R SHROPSHIRE, PE, PP  
A ANDREW FERANDA, PE, CME

PHONE  
609 714 0400  
FAX  
609 714 9944

August 21, 2007

Mr. Curt Mitchell  
R.E. Pierson Construction Company  
426 Swedesboro Road  
Pilesgrove, New Jersey 08098

Re: **Sound Level Assessment**  
**R.E. Pierson Construction**  
**Woodbine-Oceanview Road (CR 550)**  
**Dennis Township, Cape May County, NJ**  
SA Project No. 7047B

Dear Mr. Mitchell:

At your request, Shropshire Associates, LLC has prepared a sound level analysis for the proposed concrete recycling, concrete mixing and sand processing facilities to be located along westbound Woodbine-Oceanview Road (CR 550), west of its intersection with Corsons Tavern Road (CR 628) in Dennis Township, Cape May County, New Jersey. Access to the site is provided via two existing driveways along Woodbine-Oceanview Road. For the purposes of this assessment, Woodbine-Oceanview Road is assumed to extend in a general east-west direction.

The adjoining properties include commercial offices to the south, electrical utilities to the east, a camp ground to the north, and commercial and municipal offices to the west. The site contains approximately 170.8 acres and is known on the Dennis Township Tax Map as Lots 68.01, 73, 74.02, 75.03, and 78.04 in Block 224 (Tax Map Sheet Nos. 25 and 26). The site is located in the both the Business District (B) and Conservation District (C), as per the Dennis Township Zoning Map. However, the proposed uses will be located entirely within the Business District.

The purpose of this study is to provide ambient sound pressure level (SPL) data to be representative of the existing conditions (without the concrete mixing plant and sand processing facility) and projected sound pressure levels for the proposed uses. The scope of study for this sound level analysis is as follows:

- Review the latest site plan prepared by Gibson Associates, P.A. dated December 13, 2006.
- Review the Land Use Code of Dennis Township.



- Identify target areas to conduct ambient sound pressure level (SPL) measurements as per information provided by the project team and via a field investigation of existing site characteristics.
- Identify all sources contributing sound to the point of measurement.
- Survey the area on foot to identify any other sound sources which may affect measurements.
- Conduct daytime ambient and source-on sound level measurements at the Dennis Township R.E. Pierson facility in accordance with the procedures outlines in the State Noise Control Act (N.J.A.C. 7:29).
- Conduct daytime ambient and source-on sound level measurements at the two comparable Logan Township R.E. Pierson facilities in accordance with the procedures outlines in the State Noise Control Act (N.J.A.C. 7:29).
- Estimate projected sound pressure levels to the adjacent property lines from the proposed R.E. Pierson facility.
- Evaluate the current and projected noise levels in relation to State standards. The State daytime noise threshold for continuous airborne sound at a residential property line for noise generated by the site is 65 A-weighted decibels between 7:00 AM and 10:00 PM. The threshold to nonresidential property lines is 65 A-weighted decibels without time stipulations.
- Prepare sketches identifying location of measurements.

### **SPL Data Collection Conditions**

Ambient (background) and source-on SPL measurements (concrete recycling facility) were conducted along the northern property line, adjacent to the campground property, at the proposed Dennis Township site May 29, 2007, between the hours of 11:30 AM to 3:00 PM. Ambient sound is the total of all sounds in the environment, other than the noise from the source of interest. Ambient and source-on SPL measurements were also conducted at the two Logan Township R.E. Pierson locations (concrete mixing and sand processing facilities) on July 13, 2007, between the hours of 1:30 PM to 4:30 PM. The weather conditions during these measurements are summarized in Table 1 below.



Weather Conditions						
Date	Location	Measurement Point*	Time	Conditions	Temp.	Wind
29 May 2007	Dennis Twp, Cape May County Proposed Site on Woodbine Ocean View Road	A	1:14 PM	Clear	75°F	< 2 MPH (5 MPH Gust)
			1:28 PM	Clear	75°F	< 3 MPH (7 MPH Gust)
		B	12:57 PM	Clear	72°F	< 2 MPH
			1:44 PM	Clear	74°F	< 2 MPH
		C	12:40 PM	Clear	72°F	< 2 MPH
			1:57 PM	Clear	74°F	< 3 MPH (5 MPH Gust)
		D	12:21 PM	Clear	75°F	< 3 MPH
			2:12 PM	Clear	78°F	< 2 MPH
		E	12:07 PM	Clear	74°F	< 2 MPH
			2:22 PM	Clear	78°F	< 2 MPH
		F	11:34 AM	Clear	74°F	< 2 MPH (4 MPH Gust)
			2:33 PM	Clear	77°F	< 4 MPH (7 MPH Gust)
		G	11:48 AM	Clear	74°F	< 2 MPH
			2:42 PM	Clear	77°F	< 3 MPH (7 MPH Gust)
13 July 2007	Logan Township, Gloucester County Existing Site (Concrete Mixing) on Floodgate Road	B	1:37 PM	Partly Cloudy	86°F	< 5 MPH
			2:05 PM	Cloudy	86°F	< 4 MPH
		C	1:30 PM	Partly Cloudy	86°F	< 5 MPH
		D	1:19 PM	Partly Cloudy	85°F	< 4 MPH
		E	1:05 PM	Partly Cloudy	85°F	< 4 MPH
			3:00 PM	Cloudy	86°F	< 4 MPH
13 July 2007	Logan Township, Gloucester County Existing Site (Sand Processing) on Oak Grove Road	B	3:46 PM	Cloudy	87°F	< 2 MPH
			3:54 PM	Cloudy	87°F	< 2 MPH
		C	3:41 PM	Cloudy	86°F	< 2 MPH
		D	3:36 PM	Cloudy	86°F	< 2 MPH
		E	3:29 PM	Cloudy	86°F	< 2 MPH
			4:24 PM	Cloudy	87°F	< 2 MPH

\* Please see Tables 2, 4 and 5, as well as Sketches A, B and C for measurement locations

### Sound Level Measuring Equipment

All SPL data was collected using a Quest Model 2900 Integrating / Logging, Type 2, Sound Level Meter. The unit was calibrated using a Quest QC-10 Calibrator (114dB – 1000Hz) at the start and end of each study and at one-hour intervals. A windscreen was



used to minimize the effect of wind gusts. A Kestrel 2000 Thermo Wind Meter was used for temperature and wind speed measurements. The sound level meter and calibrator were factory-calibrated and certified on June 17, 2006, and on June 22, 2007. All ambient and source-on SPL tests were conducted using the A-weighting network in the slow meter response mode. The tests were conducted utilizing the SPL function setting on the meter.

### Proposed Site (Dennis Township) SPL Data Collection

Ambient SPL measurements were taken at seven locations along the northern property line at the proposed site, adjacent to the campground property. The data collection locations and specifics for the proposed site are summarized in Table 2 below and are illustrated in Figure A attached to the end of this assessment.

Table 2 Proposed R.E. Pierson Site Dennis Township - Cape May County, New Jersey Ambient and Source-On Measurement Site Locations and Specifics	
A	along northern property line; approximately 430-feet from proposed concrete mixing and sand processing facility
B	along northern property line; approximately 320-feet from proposed concrete mixing and sand processing facility
C	along northern property line; approximately 400-feet from proposed concrete mixing and sand processing facility
D	along northern property line; approximately 700-feet from proposed concrete mixing and sand processing facility
E	along northern property line; approximately 1240-feet from proposed concrete mixing and sand processing facility
F	along northern property line; approximately 2040-feet from proposed concrete mixing and sand processing facility
G	along northern property line; approximately 2620-feet from proposed concrete mixing and sand processing facility

The daytime measurement locations at the proposed site, time of measurements, reading range in decibels, and comments regarding the sound sources and intermittent readings are shown below in Table 3.

As shown below in Table 3, all measurement locations at the proposed R.E. Pierson facility currently conform to the State Noise Control Act requirements for daytime noise levels. The primary source of noise at the measurement locations was traffic along Woodbine Oceanview Road, wind and surrounding birds / wildlife. Please note that the northern edge of the proposed site, bordering the campground, currently has a 15-20 foot earthen berm running the entire length of the property. All ambient measurements were conservatively taken on the proposed site side of the berm.



Table 3 Proposed RE Pierson Site Dennis Township - Cape May County - New Jersey Ambient Measurements			
Location	Time	Reading Range (dBA)	Comments
	1:32 - 1:33 PM	40.0 - 47.0	
	1:33 - 1:34 PM	42.2 - 46.6	
B	1:47 - 1:48 PM	41.2 - 48.9	Wind / Traffic on CR 550 primary sources of noise
	1:48 - 1:49 PM	38.9 - 43.3	
	1:49 - 1:50 PM	39.6 - 45.8	
C	2:00 - 2:01 PM	40.0 - 46.8	Water / Wind / Traffic on CR 550 primary sources of noise; Plane overhead extraneous source of noise
	2:01 - 2:02 PM	41.9 - 47.5	
	2:02 - 2:03 PM	40.9 - 47.5	
D	2:15 - 2:16 PM	41.7 - 45.8	Wind / Adjacent campground pond sprinkler / Traffic on CR 550 primary sources of noise; Offsite construction vehicle reverse beacon extraneous source of noise
	2:16 - 2:17 PM	43.1 - 48.0	
	2:17 - 2:18 PM	42.7 - 55.0	
E	2:25 - 2:26 PM	38.5 - 43.2	Birds / Wind / Traffic on CR 550 primary sources of noise; Plane overhead extraneous source of noise
	2:26 - 2:27 PM	39.5 - 43.7	
	2:27 - 2:28 PM	40.3 - 52.8	
F	2:35 - 2:36 PM	37.7 - 43.3	Wind / Traffic on CR 628 primary sources of noise; Ducks flying overhead extraneous source of noise
	2:36 - 2:37 PM	38.7 - 50.9	
	2:37 - 2:38 PM	44.2 - 56.9	
G	2:45 - 2:46 PM	40.6 - 47.6	Wind / Traffic on CR 628 primary sources of noise; People talking in the adjacent campground extraneous source of noise
	2:46 - 2:47 PM	38.7 - 43.2	
	2:47 - 2:48 PM	37.7 - 44.5	

Source-on sound pressure level measurements were then taken at the measurement locations at the proposed R.E. Pierson site. The operations of the concrete recycling facility and traffic on area roadways were the predominant sources of noise at the proposed RE Pierson site during the source-on measurements. The data collection locations and specifics of the source-on measurements are as shown previously in Table 2 of this report and in Figures A attached to the end of this assessment.

Tables 4 below indicates the measurement locations, time of measurements, reading range in decibels, the corrected source sound pressure level, and comments regarding the sound sources and intermittent reading for the site operation.

Corrected (source) levels are determined from the arithmetic difference between the source levels and the ambient levels. This difference, if less than 10.0 dBA and greater than 3.0 dBA, is then correlated with the corresponding correction factor as outlined in N.J.A.C. 7:29-2.10, Table 1. The correction factor is then deducted from the



source-on or total measurement yielding the corrected source sound level. Measurements that result in a difference of less than 3.0 dBA are generally regarded as unenforceable, and no correction is necessary for measurements that result in a difference greater than 10.0 dBA. In this particular case, the difference between the source levels and the ambient levels were less than 3.0 dBA during most measurement time intervals and are regarded as unenforceable. The corrected (source) levels along the northern property line at the proposed RE Pierson site are all below the State daytime noise threshold of 65 A-weighted decibels.

Table 4 Proposed RE Pierson Site (Concrete Recycling Facility) Dennis Township, Cape May County, New Jersey Source-On Measurements				
Location	Time	Reading Range (dBA)	Corrected (Source) Level	Comments
A	1:17 - 1:18 PM	54.1 - 56.1	51.8	Recycling Equipment / Birds / Wind / Traffic on CR 550 primary sources of noise
	1:18 - 1:19 PM	53.2 - 55.1	---	
	1:19 - 1:20 PM	53.8 - 55.5	53.8	
B	1:00 - 1:01 PM	51.0 - 55.3	---	Recycling Equipment / Birds / Wind / Traffic on CR 550 primary sources of noise; Car-horn extraneous source of noise
	1:01 - 1:02 PM	51.4 - 56.0	---	
	1:02 - 1:03 PM	49.6 - 54.1	---	
C	12:43 - 12:44 PM	44.6 - 50.3	---	Recycling Equipment / Birds / Wind / Traffic on CR 550 primary sources of noise
	12:44 - 12:45 PM	45.2 - 48.9	---	
	12:45 - 12:46 PM	45.4 - 50.1	---	
D	12:24 - 12:25 PM	44.8 - 53.6	---	Recycling Equipment / Birds / Wind / Adjacent campground pond sprinkler / Traffic on CR 550 primary sources of noise; Children playing in campground extraneous source of noise
	12:25 - 12:26 PM	43.2 - 49.7	---	
	12:26 - 12:27 PM	42.5 - 49.4	---	
E	12:10 - 12:11 PM	39.6 - 47.2	---	Recycling Equipment / Birds / Wind / Traffic on CR 550 primary sources of noise; People talking in campground extraneous source of noise
	12:11 - 12:12 PM	39.7 - 46.5	---	
	12:12 - 12:13 PM	35.3 - 38.3	---	
F	11:37 - 11:38 AM	38.5 - 47.0	---	Wind / Traffic on CR 628 primary sources of noise
	11:38 - 11:39 AM	38.6 - 43.5	---	
	11:39 - 11:40 AM	40.0 - 43.5	---	
G	11:51 - 11:52 AM	34.9 - 43.4	---	Wind / Traffic on CR 628 primary sources of noise
	11:52 - 11:53 AM	34.9 - 41.0	---	
	11:53 - 11:54 AM	35.3 - 38.3	---	



### Comparable Sites (Logan Township) SPL Data Collection

Ambient SPL measurements were taken at two Logan Township R.E. Pierson facilities that currently have operations that are proposed at the Dennis Township site. These facilities were used for comparison to the proposed concrete mixing plant and sand processing facility. The ambient SPL measurements were taken at four locations around the comparable site that correspond to the distances and approximate locations of the ambient measurement locations taken at the proposed site (locations B, C, D, E). The data collection locations and specifics are listed in Tables 5 and 6 below and are illustrated in Figures B and C attached to the end of this assessment.

Table 5 Comparable Site - RE Pierson Floodgate Road (Concrete Mixing) Facility Logan Township - Camden County - New Jersey Ambient and Source-On Measurement Site Locations and Specifics	
Location	Description
B	on the southern property line; approximately 320-feet south of the concrete mixing facility
C	on adjacent property; approximately 400-feet south of the concrete mixing facility
D	on adjacent property; approximately 700-feet southwest of the concrete mixing facility
E	on adjacent property; approximately 1240-feet south-southwest of the concrete mixing facility

Table 6 Comparable Site - RE Pierson Oak Grove Road (Sand Processing) Facility Logan Township - Camden County - New Jersey Ambient and Source-On Measurement Site Locations and Specifics	
Location	Description
B	along western property line; approximately 320-feet south of the sand processing facility
C	along western property line; approximately 400-feet south of the sand processing facility
D	along western property line; approximately 700-feet south of the sand processing facility
E	along western property line; approximately 1240-feet south of the sand processing facility



Tables 7 and 8 below indicate the measurement locations at the comparable sites, time of measurements, reading range in decibels, and comments regarding the sound sources and intermittent readings.

As shown below in Tables 7 and 8, all measurement locations at the comparable R.E. Pierson facilities conform to the State Noise Control Act requirements for daytime noise levels. The primary source of noise at the measurement locations was traffic along area roadways as well as birds / wildlife.

Table 7 Comparable Site: R.E. Pierson Floodgate Road (Concrete Mixing) Facility Logan Township, Gloucester County, New Jersey Ambient Measurements			
Location	Time	Reading Range (dBA)	Comments
B	2:37 - 2:38 PM	50.1 - 53.9	Winds / Birds primary sources of noise -- overhead jet extraneous source of noise (not peak measurement)
	2:38 - 2:39 PM	51.1 - 53.1	
	2:39 - 2:40 PM	48.9 - 50.7	
C	2:42 - 2:43 PM	47.2 - 49.1	Winds / Birds primary sources of noise -- offsite construction vehicle extraneous source of noise (not peak measurement)
	2:43 - 2:44 PM	47.1 - 49.7	
	2:44 - 2:45 PM	49.8 - 50.6	
D	2:47 - 2:48 PM	46.4 - 48.1	Wind / Birds primary sources of noise -- offsite construction vehicle / overhead jet extraneous sources of noise (not peak measurements)
	2:48 - 2:49 PM	46.0 - 48.7	
	2:49 - 2:50 PM	45.8 - 48.3	
E	2:51 - 2:52 PM	43.9 - 48.7	Winds / Birds primary sources of noise -- offsite construction vehicle / overhead jet extraneous sources of noise (not peak measurements)
	2:52 - 2:53 PM	47.0 - 48.2	
	2:53 - 2:54 PM	46.9 - 47.9	





Table 8 Comparable Site - RE Pierson Oak Grove Road (Sand Processing) Facility Logan Township - Gloucester County - New Jersey Ambient Measurements			
Location	Time	Reading Range (dBA)	Comments
B	4:04 - 4:05 PM	45.8 - 48.5	US Rt 322 / Birds / Geese on pond primary sources of noise -- overhead jet extraneous source of noise (not peak measurement)
	4:05 - 4:06 PM	52.0 - 53.3	
	4:06 - 4:07 PM	47.9 - 50.2	
C	4:09 - 4:10 PM	47.0 - 50.6	US Rt 322 / Birds / Geese on pond primary sources of noise -- overhead jet extraneous source of noise (not peak measurement)
	4:10 - 4:11 PM	47.1 - 49.3	
	4:11 - 4:12 PM	47.0 - 50.7	
D	4:14 - 4:15 PM	46.3 - 50.2	US Rt 322 / Birds / Insects primary sources of noise
	4:15 - 4:16 PM	47.2 - 52.8	
	4:16 - 4:17 PM	48.1 - 51.6	
E	4:19 - 4:20 PM	48.9 - 52.3	US Rt 322 / Birds / Insects primary sources of noise
	4:20 - 4:21 PM	50.0 - 52.4	
	4:21 - 4:22 PM	49.2 - 51.4	

Source-on sound pressure level measurements were then taken at measurement locations that correspond to the nearest camp ground property lines at the proposed R.E. Pierson site (locations B, C, D and E). The operations of the concrete mixing equipment, sand processing equipment, construction vehicles and traffic on area roadways were the predominant sources of noise at the comparable RE Pierson sites during the source-on measurements. The data collection locations and specifics of the source-on measurements are as shown previously in Tables 5 and 6 of this report and in Figures B and C attached to the end of this assessment.

Tables 9 and 10 below indicate the measurement locations, time of measurements, reading range in decibels, the corrected source sound pressure level, and comments regarding the sound sources and intermittent reading for the site operation.

As previously described, corrected (source) levels are determined from the arithmetic difference between the source levels and the ambient levels. In these particular cases, the difference between the source levels and the ambient levels were less than 3.0 dBA during most measurement time intervals and are regarded as unenforceable. The corrected source levels that correspond to the nearest points along the northern property line at the proposed Dennis Township site are well below the State daytime noise threshold of 65 A-weighted decibels.



Table 9 Comparable Site - RE Pierson Floodgate Road (Concrete Mixing) Facility Logan Township - Gloucester County - New Jersey Source On Measurements				
Location	Time	Reading Range (dBA)	Corrected (Source) Level	Comments
B	1:39 - 1:40 PM	56.0 - 58.1	---	Traffic / Operations onsite / Birds / Wind primary sources of noise
	1:40 - 1:41 PM	58.3 - 59.1	56.3	
	1:41 - 1:42 PM	56.8 - 58.7	---	
C	1:32 - 1:33 PM	54.1 - 56.3	51.5	Traffic / Operations onsite / Birds / Wind primary sources of noise -- offsite heavy equipment extraneous source of noise (not peak measurement)
	1:33 - 1:34 PM	53.8 - 57.0	51.0	
	1:34 - 1:35 PM	54.6 - 56.8	52.4	
D	1:21 - 1:22 PM	50.8 - 51.8	---	Traffic / Operations onsite / Birds / Wind primary sources of noise -- offsite heavy equipment extraneous source of noise (not peak measurement)
	1:22 - 1:23 PM	48.9 - 51.1	---	
	1:23 - 1:24 PM	47.1 - 52.5	---	
E	1:09 - 1:10 PM	41.2 - 45.8	---	Concrete crushing equipment / Wind / Birds / Campground sprinkler primary sources of noise
	1:10 - 1:11 PM	40.1 - 48.1	---	
	1:11 - 1:12 PM	44.0 - 45.8	---	

Table 10 Comparable Site - RE Pierson Oak Grove Road (Sand Processing) Facility Logan Township - Gloucester County - New Jersey Source On Measurements				
Location	Time	Reading Range (dBA)	Corrected (Source) Level	Comments
B	3:48 - 3:49 PM	55.3 - 59.6	---	Sand Processing Equipment / US Rt 322 traffic primary sources of noise / overhead jet extraneous source of noise (not peak measurement)
	3:49 - 3:50 PM	53.1 - 56.3	---	
	3:50 - 3:51 PM	54.6 - 59.5	---	
C	3:42 - 3:43 PM	52.5 - 54.2	---	Sand Processing Equipment / US Rt 322 traffic primary sources of noise
	3:43 - 3:44 PM	51.7 - 54.9	---	
	3:44 - 3:45 PM	53.2 - 54.9	---	
D	3:37 - 3:38 PM	50.0 - 53.4	---	US Rt 322 Traffic / Birds / Wind primary sources of noise -- overhead jet extraneous source of noise (not peak measurement)
	3:38 - 3:39 PM	49.1 - 53.2	---	
	3:39 - 3:40 PM	48.3 - 56.9	---	
E	3:32 - 3:33 PM	50.7 - 53.7	---	US Rt 322 Traffic / Birds / Wind primary sources of noise
	3:33 - 3:34 PM	51.8 - 54.7	---	
	3:34 - 3:35 PM	50.8 - 53.4	---	



### Projected Sound Pressure Levels

The projected sound pressure levels were derived by first combining the corrected (source) sound pressure levels at the proposed RE Pierson site and at the two existing Logan Township RE Pierson facilities (to account for the combined effect of running the concrete recycling, concrete mixing and sand processing equipment concurrently) and then adding these combined source-on measurements to the ambient measurements taken at the proposed Dennis Township site. Note that the projected sound pressure levels include the ambient sound pressure levels at the proposed site and do not solely represent the noise generated by the proposed uses, which are shown in the column "Total (Combined) Level" in Table 11 below. The total (combined) sound pressure levels and projected sound pressure levels were obtained using the methodology as previously described for corrected source levels, except the sound pressure levels are combined and not subtracted. Table 11 below indicates the projected sound pressure levels at the proposed Dennis Township site. The measurement locations correspond to the locations as shown previously in Table 2.

Table 11 Proposed RE Pierson Site Dennis Township - Cape May County - New Jersey Projected Source-On Measurements					
Location	Corrected (Source) Level (dBA)			Total (Combined) Sound Pressure Level (dBA)	Projected Sound Pressure Level (dBA)
	Concrete Recycling Facility	Concrete Mixing Facility	Sand Processing Facility		
A	-	-	-	-	-
B	49.6	56.0	53.1	58.4	58.9
C	44.6	51.0	51.7	54.8	55.5
D	42.5	47.1	48.3	51.4	56.6
E	35.3	40.1	50.7	51.2	55.1
F	-	-	-	-	-
G	-	-	-	-	-

Both the total (combined) sound pressure levels (which represent the noise as created by running the concrete recycling, concrete mixing and sand processing facilities together) and the projected sound pressure levels (which represent the noise of the proposed facilities and the ambient noise at the proposed site) are below the State daytime noise threshold of 65 A-weighted decibels.



### Study Results and Recommendations

As indicated above by the corrected (source) levels in Tables 4, 9 and 10 and the total (combined) levels in Table 11, the operation of the proposed RE Pierson facility (comprising a concrete recycling, concrete mixing and sand processing facilities) is anticipated to comply with the New Jersey Noise Control Statute, N.J.A.C.7:29 for daytime continuous airborne sound levels not exceeding the 65 dBA threshold at the commercial and residential property lines between the hours of 7:00 AM and 10:00 PM.


### Conclusions

Based on the results presented in this study, the following conclusions are provided:

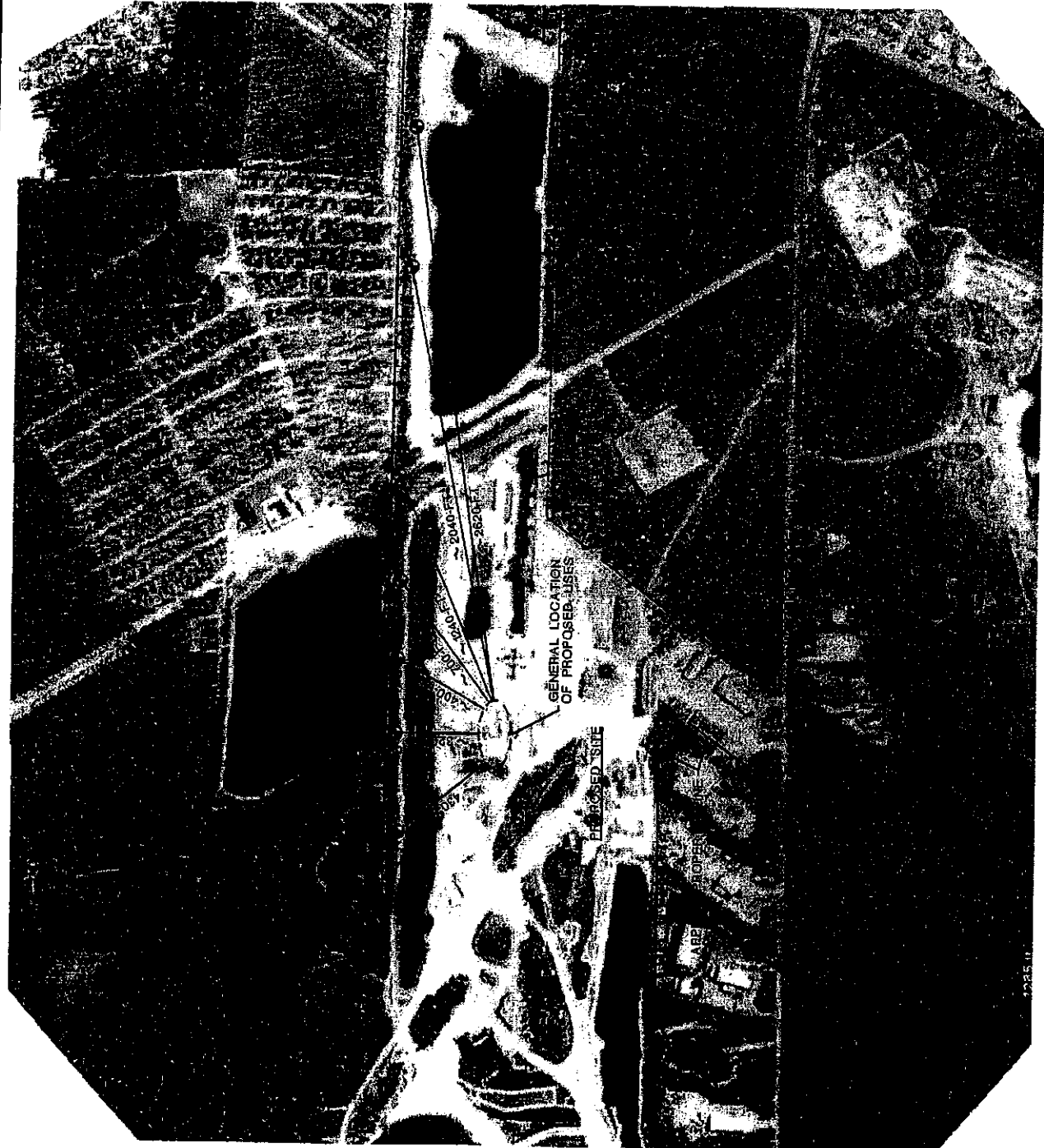
1. The ambient and source-on sound pressure levels at the proposed RE Pierson site currently conform to the State Noise Control Statute, N.J.A.C. 7:29, requirements for daytime noise levels along the northern property line. The ambient sound pressure levels appear to be influenced primarily by traffic on the area roadways, birds / wildlife and the nearby campground.
2. The projected sound pressure levels at the proposed RE Pierson site are anticipated to comply with the New Jersey Noise Control Statute, N.J.A.C.7:29, for daytime continuous airborne sound levels not exceeding the 65 dBA threshold at the residential and commercial property lines between the hours of 7:00 AM and 10:00 PM.
3. The existing earthen berm along the northern edge of the proposed site will further dampen the effect of the proposed operation.

If you should have any questions or need additional information, please call.

Sincerely,  
**Shropshire Associates, LLC**

  
Randal C. Barranger  
Senior Project Consultant  
Certified Noise Technician  
RCBS/mas

MEASUREMENT LOCATIONS  
PROPOSED RE PIERSON SITE  
WOODBINE OCEANVIEW ROAD  
DENNIS TOWNSHIP - CAPE MAY COUNTY



NOT TO SCALE

MEASUREMENT LOCATIONS

EXISTING RE PIERSON SITE  
FLOODGATE ROAD (CONCRETE MIXING FACILITY)  
LOGAN TOWNSHIP - GLOUCESTER COUNTY



NOT TO SCALE

MEASUREMENT LOCATIONS

EXISTING RE PIERSON SITE  
OAK GROVE ROAD (SAND PROCESSING FACILITY)  
LOGAN TOWNSHIP - GLOUCESTER COUNTY



NOT TO SCALE