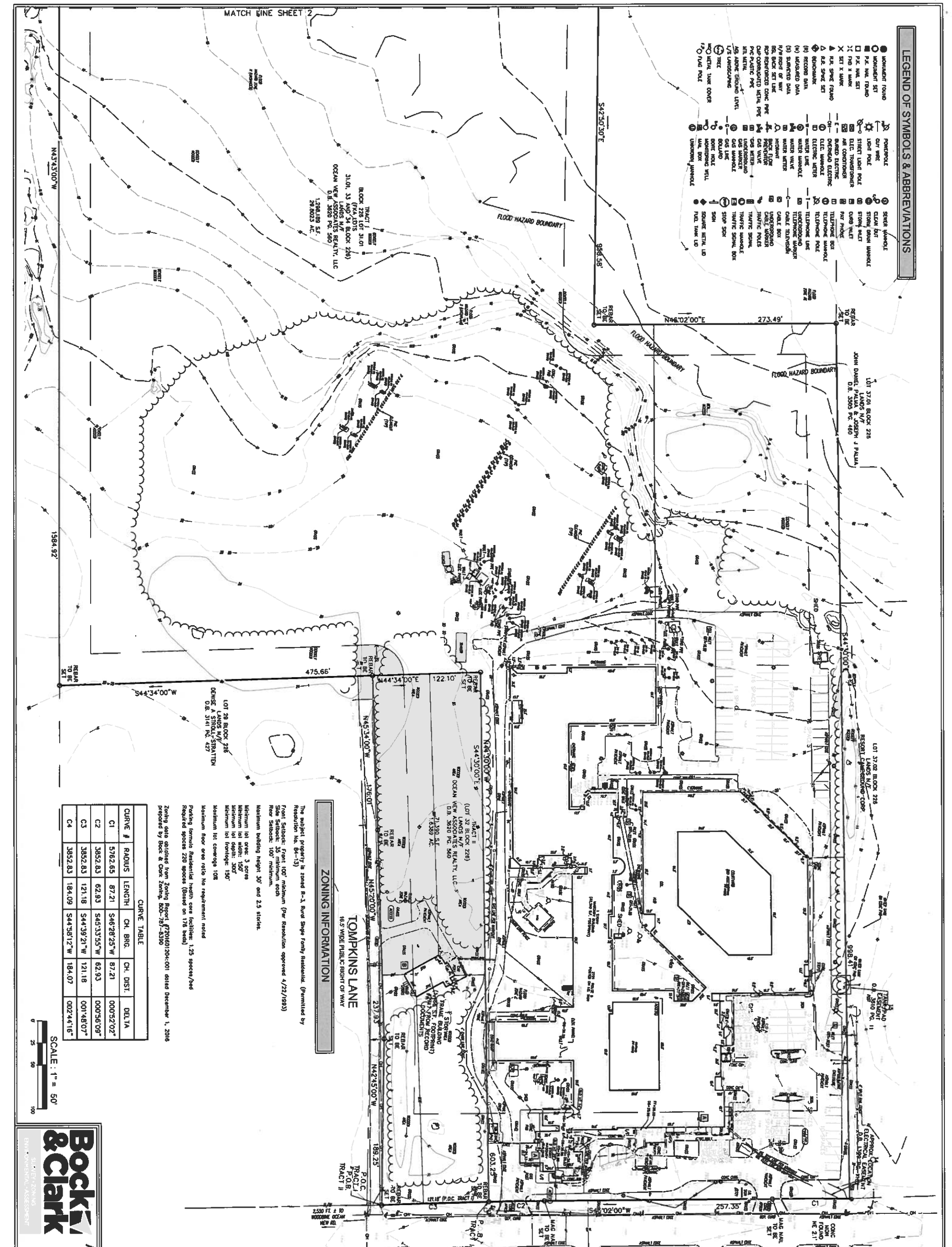


LEGEND OF SYMBOLS & ABBREVIATIONS

- MONUMENT FOUND
- MONUMENT SET
- P.C. WALL FOUND
- P.C. WALL SET
- × SET X MARK
- △ P.C. STAKE FOUND
- △ P.C. STAKE SET
- △ BENCHMARK
- (h) RECOVERED DATA
- (h) SUGGESTED DATA
- h/4 POINT OF VIEW
- h/4 BACK SET LINE
- h/4 REINFORCED CONC. PIPE
- h/4 CAP ORNAMENTED METAL PIPE
- h/4 PVC PLASTIC PIPE
- h/4 METAL PIPE
- h/4 METAL CHIRAL LEVEL
- h/4 L/S LASSOPOLYME
- h/4 METAL TAPER COVER
- h/4 OLD POLE
- POWERPOLE
- CURV WIRE
- LIGHT POLE
- STREET LIGHT POLE
- ELEC. TRANSFORMER
- AIR CONDITIONER
- BARRIED ELECTRIC
- ELEC. WIRE/POLE
- ELEC. LETTER
- WATER LINE
- WATER WIRE/POLE
- WATER VALVE
- WATER LETTER
- H/W POINT OF VIEW
- h/4 BACK SET LINE
- h/4 REINFORCED CONC. PIPE
- h/4 CAP ORNAMENTED METAL PIPE
- h/4 PVC PLASTIC PIPE
- h/4 METAL PIPE
- h/4 METAL CHIRAL LEVEL
- h/4 L/S LASSOPOLYME
- h/4 METAL TAPER COVER
- h/4 OLD POLE
- STEEL WIRE/POLE
- CUMUL. BUR
- STUCCO OVER WIRE/POLE
- STUCCO W/LET
- CURV WIRE
- PVC PIPING
- TELEPHONE BOX
- TELEPHONE POLE
- TELEPHONE WIRE/POLE
- TELEPHONE LETTER
- UNDERGROUND CABLE TRENCH/POLE
- CABLE BOX
- UNDERGROUND CABLE WIRE/POLE
- UNDERGROUND CABLE LETTER
- TRAFFIC SIGNAL
- TRAFFIC SIGNAL BOX
- STOP SIGN
- SQUARE METAL LD
- ROUND METAL LD
- ROUND METAL LD
- UNDERGROUND
- UNDERGROUND



ZONING INFORMATION

The subject property is zoned R-1, Single Single Family Residential. (Permitted by Resolution No. 64-13)

Front Setback: Front 100' minimum (Per Resolution approved 4/22/1993)

Side Setback: 100' minimum.

Minimum building height 30' and 2.5 stories.

Minimum lot area: 3 acres

Minimum lot depth: 150'

Minimum lot frontage: 150'

Minimum lot coverage: 10%

Maximum floor area ratio: No requirement noted

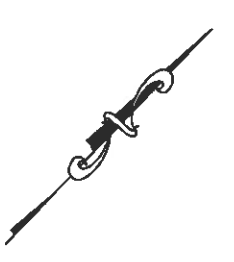
Permitted uses: Residential health care facilities, 1.25 spaces/acre

Required spaces: 220 spaces (Based on 178 beds)

Zoning data obtained from Zoning Report #7201601294-001 dated December 1, 2016 prepared by Bob & Clark Zoning, 805-787-8399

CURVE TABLE

CURVE #	RADIUS	LENGTH	CH. BRG.	CH. DIST.	DELTA
C1	5762.65	87.21	S46°28'25"W	87.21	000°52'02"
C2	3852.83	62.83	S45°33'55"W	82.93	000°56'09"
C3	3852.83	121.18	S44°39'21"W	121.18	001°48'07"
C4	3852.83	184.09	S44°58'12"W	184.07	002°44'16"



John B. Clark

Survey Performed By:
 John B. Clark, L.S.
 1114 Ocean Blvd, Suite B
 Ocean View, NJ 08050
 NJ Certificate of Authorization: 246238154900
 Phone (610) 365-2907
 Fax (610) 365-2828
 Email: jclark@bockandclark.com
 Project No. 5875

BOCK & CLARK
 SURVEYORS & ENGINEERS
 1114 OCEAN BLVD, SUITE B
 OCEAN VIEW, NJ 08050

ALTAINSPS LAND TITLE SURVEY

PREPARED FOR:
 Autumn Lake Healthcare at Ocean View &
 The Resort at Ocean View

DATE OF FIELD SURVEY: DECEMBER 13, 2017
 NETWORK PROJECT NUMBER: 20170499-001
1-(800)-SURVEYS (787-8397)
 may@bockandclark.com www.bockandclark.com

SHEET 2 OF 2